

RESOLUTION NO. 2008

A resolution of the City of Kirkland authorizing the Mayor to sign certain maintenance agreements with the Washington State Highway Commission.

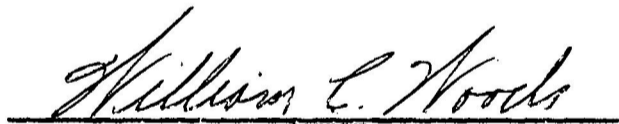
WHEREAS, the governing policy entered into between the State Highway Commission and the Association of Washington City pursuant to Chapter 235, Section 4 (5), Laws of 1957 provided for the assumption of maintenance of City streets constructed by the State in connection with limited access facilities upon written request of the State Highway Commission.

WHEREAS, the State Highway Commission has so requested as to frontage roads constructed by the State in connection with limited access project SR901 Kirkland to junction SR405 and SR520 east approach to Evergreen Point Bridge 92nd Avenue N. E. to Bellevue corporate limits (within the former City of Houghton)

NOW, THEREFORE, be it resolved by the City Council of the City of Kirkland as follows:

Section 1. The Mayor is hereby authorized and directed to sign on behalf of the City of Kirkland those certain maintenance agreements, copies of which are attached to this resolution and made a part hereof, relating to assumption by the City of Kirkland of maintenance in accordance with said contracts of the frontage roads outlined and identified in red on the maps that appear as Exhibit A to each said contract.

Adopted by a majority vote of the Kirkland City Council in regular meeting on the 2nd day of December, 1968.

  
MAYOR

ATTEST:

  
Director of Administration and Finance  
(ex officio City Clerk)

MAINTENANCE AGREEMENT

THIS AGREEMENT, made and entered into this 16<sup>th</sup> day of January, 1969, by and between the State of Washington, Washington State Highway Commission, acting through the Director of Highways, hereinafter called the "State" and the Kirkland City Council acting by and through the Mayor of the City of Kirkland and hereinafter referred to as the "City".

WITNESSETH:

WHEREAS, the State has constructed and completed SR 901, Kirkland to Jct. SR 405, to the mutual benefit of the State and the City; and

WHEREAS, Chapter 235, Section 4, (5), Laws of 1957 provides that, "The construction and maintenance of city streets over and under crossings and surface intersections of the limited access facilities shall be in accordance with the governing policy entered into between the State Highway Commission and the Association of Washington Cities".

NOW, THEREFORE, the City agrees upon completion of construction and upon written notification by the State to perform all necessary maintenance on all those sections of state constructed city streets as shown in red or otherwise indicated on Exhibit "A" attached hereto and by this reference made a part of this agreement.

PROVIDED, HOWEVER, that the State reserves the right to examine and approve or disapprove any operation other than "regular or routine maintenance", which the City may propose to perform on the area shown on said Exhibit "A".

PROVIDED FURTHER that the State reserves the right to inspect and either approve or disapprove maintenance work on any section in which Federal Funds have participated.

any such section should not meet recognized minimum requirements for maintenance of the type of street involved, then the State may, through its own forces bring said section up to the proper standards and the cost of the same shall be deducted from any

GM 445

monies due or to become due the City from its allocation of motor vehicle funds.

IN WITNESS WHEREOF, the parties have executed this agreement as of the day and year first above written.

(Seal)

City of Kirkland

William C. Woods  
Mayor

ATTEST:

STATE OF WASHINGTON  
WASHINGTON STATE HIGHWAY COMMISSION

Tom P. Johnson  
City Clerk

By: W. B. [unclear]  
ASSISTANT DIRECTOR FOR STATE AID

Approved as to form:

January 2, 1969

William T. Howell  
Assistant Attorney General

APPROVED  
BY [Signature]  
ASSISTANT  
MAINTENANCE ENGINEER  
DATE 1-17-69

GM 445



1. POINT OF DEPARTURE  
 2. APPROXIMATE LENGTH  
 3. DIRECTION OF TRAVEL  
 4. DISTANCE TO NEXT POINT  
 5. BEARING TO NEXT POINT  
 6. BEARING FROM NEXT POINT  
 7. BEARING TO NEXT POINT  
 8. BEARING FROM NEXT POINT  
 9. BEARING TO NEXT POINT  
 10. BEARING FROM NEXT POINT  
 11. BEARING TO NEXT POINT  
 12. BEARING FROM NEXT POINT  
 13. BEARING TO NEXT POINT  
 14. BEARING FROM NEXT POINT  
 15. BEARING TO NEXT POINT  
 16. BEARING FROM NEXT POINT  
 17. BEARING TO NEXT POINT  
 18. BEARING FROM NEXT POINT  
 19. BEARING TO NEXT POINT  
 20. BEARING FROM NEXT POINT  
 21. BEARING TO NEXT POINT  
 22. BEARING FROM NEXT POINT  
 23. BEARING TO NEXT POINT  
 24. BEARING FROM NEXT POINT  
 25. BEARING TO NEXT POINT  
 26. BEARING FROM NEXT POINT  
 27. BEARING TO NEXT POINT  
 28. BEARING FROM NEXT POINT  
 29. BEARING TO NEXT POINT  
 30. BEARING FROM NEXT POINT  
 31. BEARING TO NEXT POINT  
 32. BEARING FROM NEXT POINT  
 33. BEARING TO NEXT POINT  
 34. BEARING FROM NEXT POINT  
 35. BEARING TO NEXT POINT  
 36. BEARING FROM NEXT POINT  
 37. BEARING TO NEXT POINT  
 38. BEARING FROM NEXT POINT  
 39. BEARING TO NEXT POINT  
 40. BEARING FROM NEXT POINT  
 41. BEARING TO NEXT POINT  
 42. BEARING FROM NEXT POINT  
 43. BEARING TO NEXT POINT  
 44. BEARING FROM NEXT POINT  
 45. BEARING TO NEXT POINT  
 46. BEARING FROM NEXT POINT  
 47. BEARING TO NEXT POINT  
 48. BEARING FROM NEXT POINT  
 49. BEARING TO NEXT POINT  
 50. BEARING FROM NEXT POINT  
 51. BEARING TO NEXT POINT  
 52. BEARING FROM NEXT POINT  
 53. BEARING TO NEXT POINT  
 54. BEARING FROM NEXT POINT  
 55. BEARING TO NEXT POINT  
 56. BEARING FROM NEXT POINT  
 57. BEARING TO NEXT POINT  
 58. BEARING FROM NEXT POINT  
 59. BEARING TO NEXT POINT  
 60. BEARING FROM NEXT POINT  
 61. BEARING TO NEXT POINT  
 62. BEARING FROM NEXT POINT  
 63. BEARING TO NEXT POINT  
 64. BEARING FROM NEXT POINT  
 65. BEARING TO NEXT POINT  
 66. BEARING FROM NEXT POINT  
 67. BEARING TO NEXT POINT  
 68. BEARING FROM NEXT POINT  
 69. BEARING TO NEXT POINT  
 70. BEARING FROM NEXT POINT  
 71. BEARING TO NEXT POINT  
 72. BEARING FROM NEXT POINT  
 73. BEARING TO NEXT POINT  
 74. BEARING FROM NEXT POINT  
 75. BEARING TO NEXT POINT  
 76. BEARING FROM NEXT POINT  
 77. BEARING TO NEXT POINT  
 78. BEARING FROM NEXT POINT  
 79. BEARING TO NEXT POINT  
 80. BEARING FROM NEXT POINT  
 81. BEARING TO NEXT POINT  
 82. BEARING FROM NEXT POINT  
 83. BEARING TO NEXT POINT  
 84. BEARING FROM NEXT POINT  
 85. BEARING TO NEXT POINT  
 86. BEARING FROM NEXT POINT  
 87. BEARING TO NEXT POINT  
 88. BEARING FROM NEXT POINT  
 89. BEARING TO NEXT POINT  
 90. BEARING FROM NEXT POINT  
 91. BEARING TO NEXT POINT  
 92. BEARING FROM NEXT POINT  
 93. BEARING TO NEXT POINT  
 94. BEARING FROM NEXT POINT  
 95. BEARING TO NEXT POINT  
 96. BEARING FROM NEXT POINT  
 97. BEARING TO NEXT POINT  
 98. BEARING FROM NEXT POINT  
 99. BEARING TO NEXT POINT  
 100. BEARING FROM NEXT POINT

OWNERSHIP

OWNER'S NAME

ADDRESS

CITY

STATE

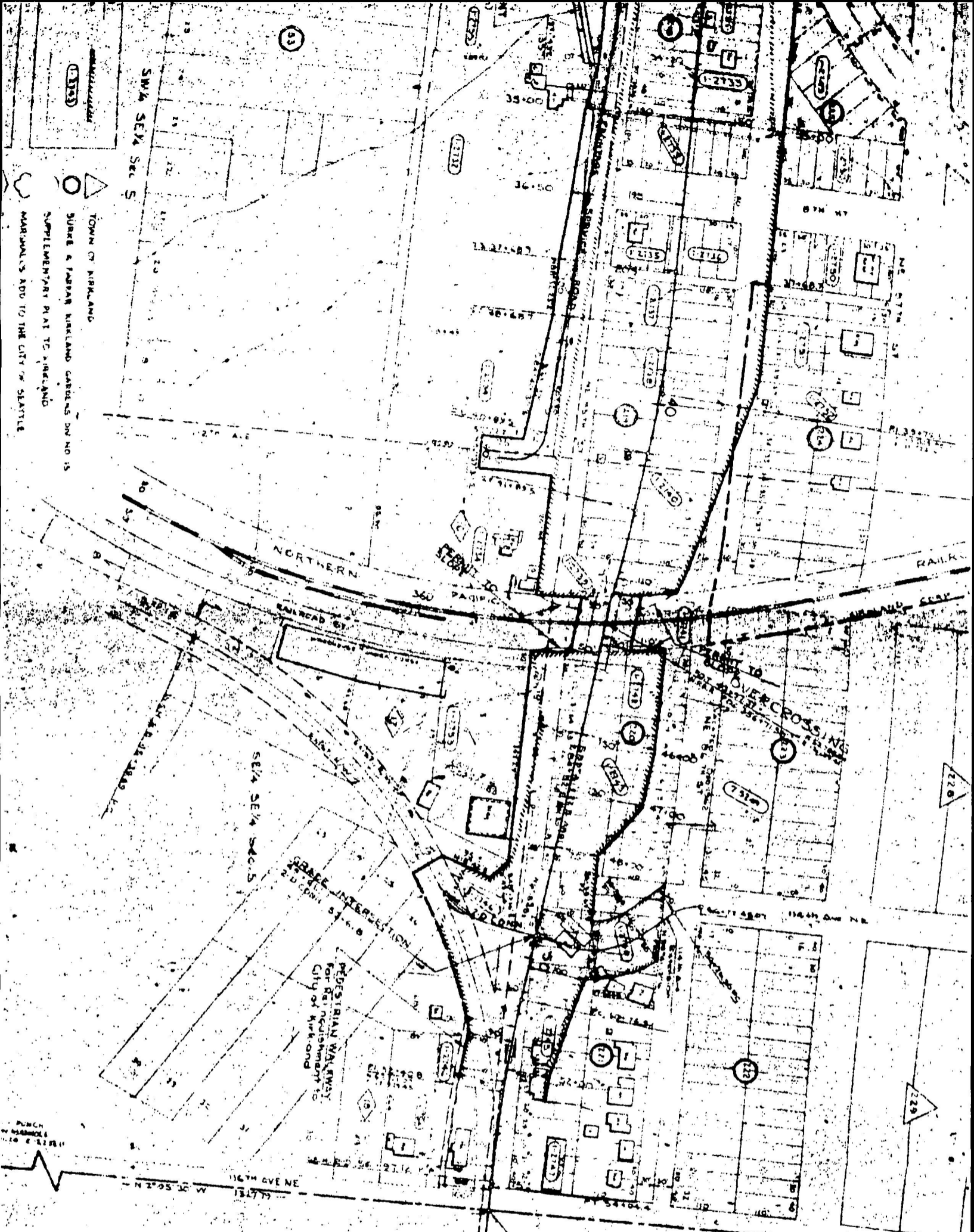
ZIP

EXHIBIT A

1762

SR 901

KIRKLAND TO SGT SR 475



TOWN OF KIRKLAND  
 SUBRE & PARTIAL KIRKLAND CARRIAGE DR NO 15  
 SUPPLEMENTARY PLAT TO AIRCRAFT  
 MARKINGS ADD TO THE CITY OF SEATTLE

PEDESTRIAN WALKWAY  
 FOR ACQUISITION TO  
 CITY OF KIRKLAND

END OF PLAN

EXHIBIT A

CS 1762 SR 901  
 KIRKLAND TO IGT SR 400

GM 445

For RW & UA overlaid see PSN No. 1 (SR.005)  
 Northup interchange to NE 160th St  
 Sheet 7 of 25 sheets approved April 12 1967

MAINTENANCE AGREEMENT

THIS AGREEMENT, made and entered into this 16<sup>th</sup> day of January, 1969, by and between the State of Washington, Washington State Highway Commission, acting through the Director of Highways, hereinafter called the "State" and the Kirkland City Council acting by and through the Mayor of the City of Kirkland and hereinafter referred to as the "City".

WITNESSETH:

WHEREAS, the State has constructed and completed SR 520; east approach to Evergreen Point Bridge, 92nd Avenue N. E. to Bellevue City Limits, to the mutual benefit of the State and the City; and

WHEREAS, Chapter 235, Section 4, (5), Laws of 1957 provides that, "The construction and maintenance of city streets over and under crossings and surface intersections of the limited access facilities shall be in accordance with the governing policy entered into between the State Highway Commission and the Association of Washington Cities".

NOW, THEREFORE, the City agrees upon completion of construction and upon written notification by the State to perform all necessary maintenance on all those sections of state constructed city streets as shown in red or otherwise indicated on Exhibit "A" attached hereto and by this reference made a part of this agreement.

PROVIDED, HOWEVER, that the State reserves the right to examine and approve or disapprove any operation other than "regular or routine maintenance", which the City may propose to perform on the area shown on said Exhibit "A".

PROVIDED FURTHER that the State reserves the right to inspect and either approve or disapprove maintenance work on any section in which Federal Funds have participated.

GM 446

2

If any such section should not meet recognized minimum requirements for maintenance of the type of street involved, then the State may, through its own forces bring said section up to the proper standards and the cost of the same shall be deducted from any monies or to become due the City from its allocation of motor vehicle funds.

IN WITNESS WHEREOF, the parties have executed this agreement as of the day and year first above written.

(Seal)

City of Kirkland as Successor to  
City of Houghton

William C. Hoods  
Mayor

ATTEST:

Tom A. Deason  
City Clerk

STATE OF WASHINGTON  
WASHINGTON STATE HIGHWAY COMMISSION

By: W. B. Brown  
Director of Highways  
ASSISTANT DIRECTOR FOR STATE AID

Approved as to form:

January 2, 1967  
William E. Howard  
Assistant Attorney General

APPROVED  
BY [Signature]  
ASSISTANT  
MAINTENANCE ENGINEER  
DATE [Signature]

GM 446

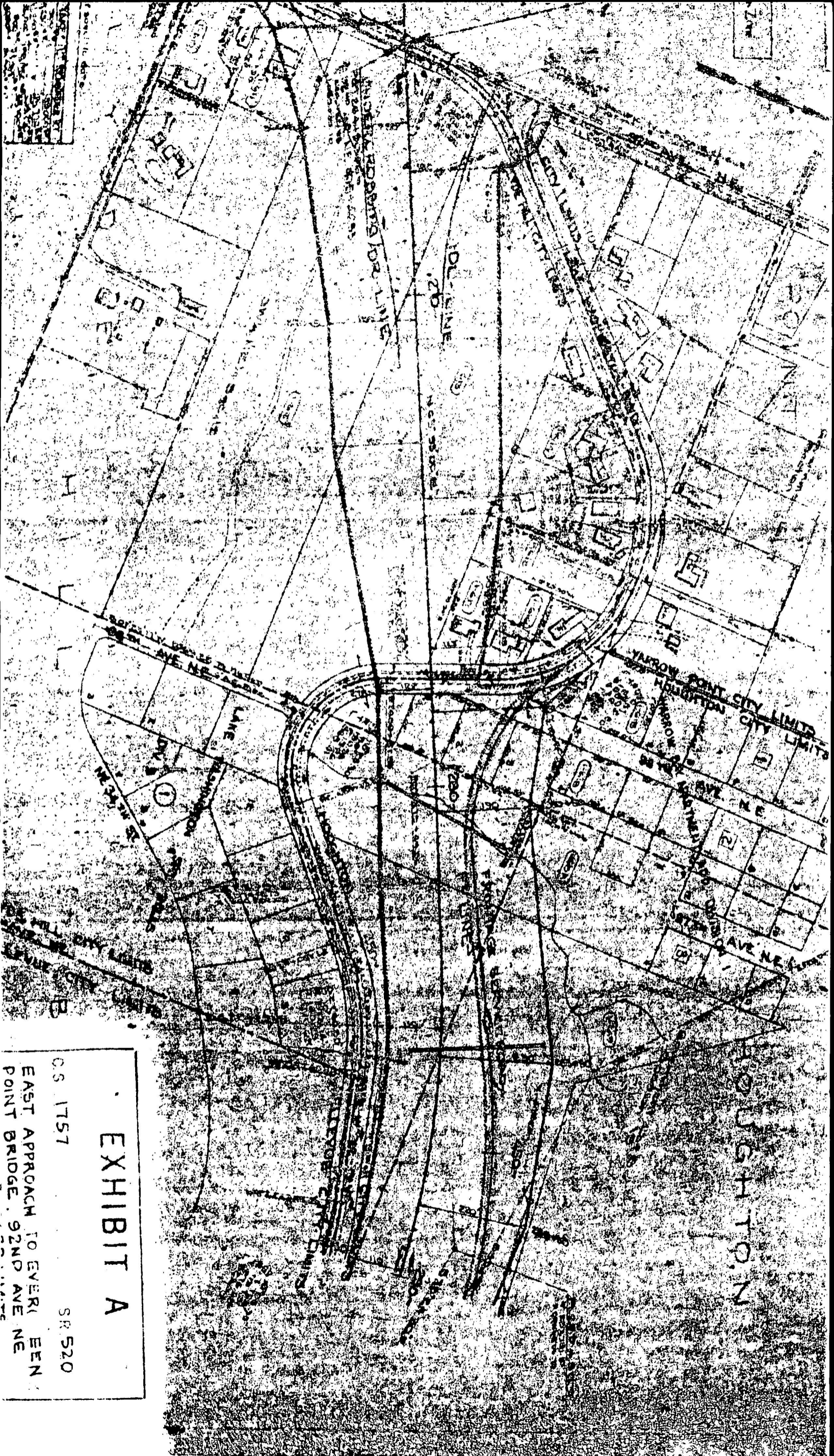


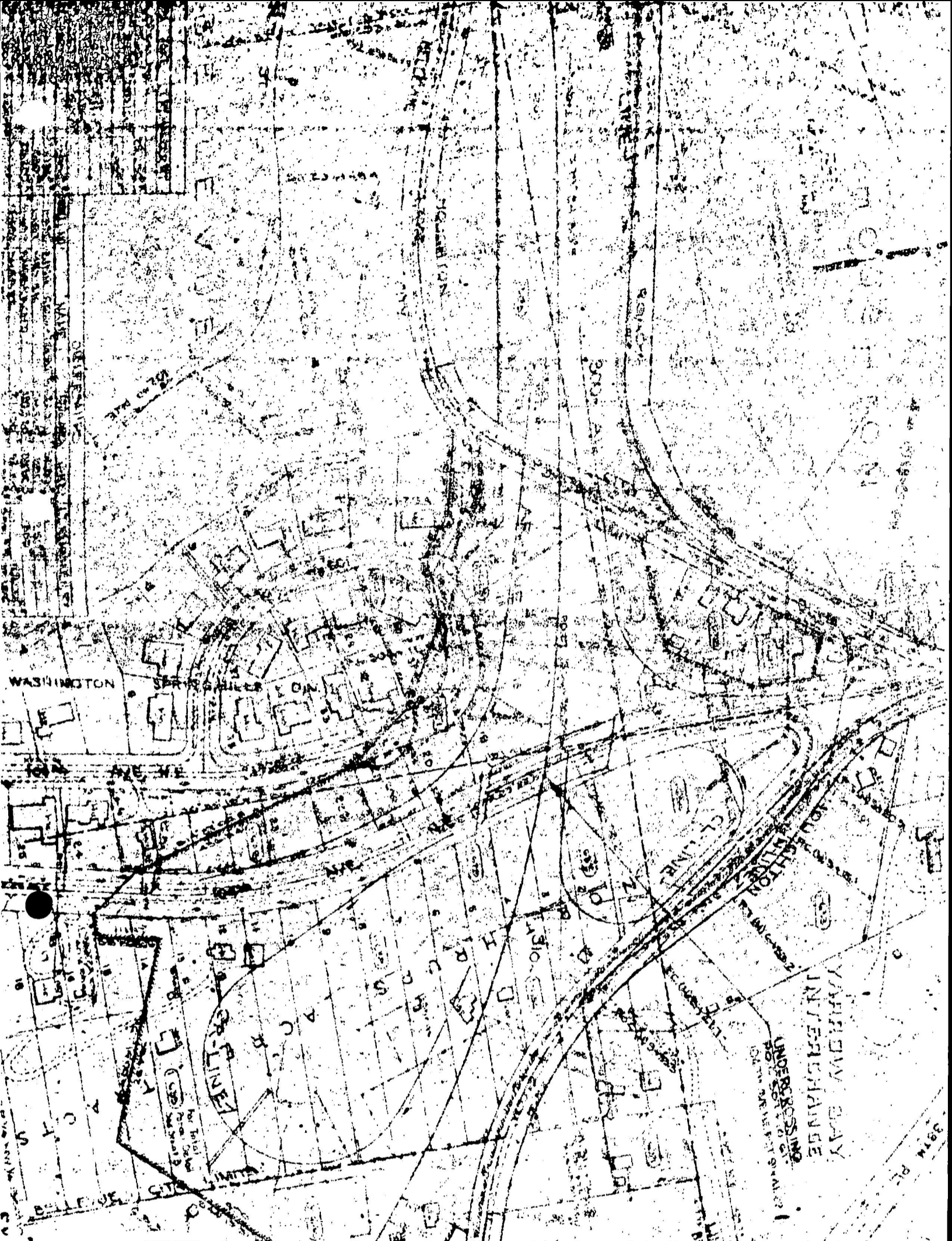
EXHIBIT A

OS 1757

SR 520

EAST APPROACH TO EVERETT  
POINT BRIDGE, 92ND AVE NE





WINDY BAY  
INVESTIGATE

UNDERPASSING  
NO. 500  
ON THE WEST SIDE

LIMITS  
BELLEVUE CITY LIMITS

STACK + ADD.  
END OF PLAIN

# EXHIBIT A

OS 1157

SR 520

EAST APPROACH TO WERGREEN  
POINT BRIDGE 5210 ARE NE  
TO BELLEVUE ORP LIMITS

446

AGREEMENT NO. 5M