

RESOLUTION NO. 2008

A resolution of the City of Kirkland authorizing the Mayor to sign certain maintenance agreements with the Washington State Highway Commission.

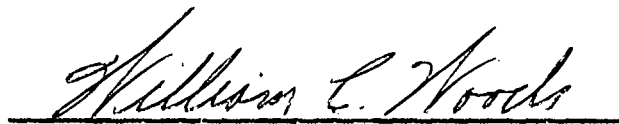
WHEREAS, the governing policy entered into between the State Highway Commission and the Association of Washington City pursuant to Chapter 235, Section 4 (5), Laws of 1957 provided for the assumption of maintenance of City streets constructed by the State in connection with limited access facilities upon written request of the State Highway Commission.

WHEREAS, the State Highway Commission has so requested as to frontage roads constructed by the State in connection with limited access project SR901 Kirkland to junction SR405 and SR520 east approach to Evergreen Point Bridge 92nd Avenue N. E. to Bellevue corporate limits (within the former City of Houghton)

NOW, THEREFORE, be it resolved by the City Council of the City of Kirkland as follows:

Section 1. The Mayor is hereby authorized and directed to sign on behalf of the City of Kirkland those certain maintenance agreements, copies of which are attached to this resolution and made a part hereof, relating to assumption by the City of Kirkland of maintenance in accordance with said contracts of the frontage roads outlined and identified in red on the maps that appear as Exhibit A to each said contract.

Adopted by a majority vote of the Kirkland City Council in regular meeting on the 2nd day of December, 1968.


MAYOR

ATTEST:


Director of Administration and Finance
(ex officio City Clerk)

MAINTENANCE AGREEMENT

THIS AGREEMENT, made and entered into this 16th day of January, 1969, by and between the State of Washington, Washington State Highway Commission, acting through the Director of Highways, hereinafter called the "State" and the Kirkland City Council acting by and through the Mayor of the City of Kirkland and hereinafter referred to as the "City".

WITNESSETH:

WHEREAS, the State has constructed and completed SR 901, Kirkland to Jct. SR 405, to the mutual benefit of the State and the City; and

WHEREAS, Chapter 235, Section 4, (5), Laws of 1957 provides that, "The construction and maintenance of city streets over and under crossings and surface intersections of the limited access facilities shall be in accordance with the governing policy entered into between the State Highway Commission and the Association of Washington Cities".

NOW, THEREFORE, the City agrees upon completion of construction and upon written notification by the State to perform all necessary maintenance on all those sections of state constructed city streets as shown in red or otherwise indicated on Exhibit "A" attached hereto and by this reference made a part of this agreement.

PROVIDED, HOWEVER, that the State reserves the right to examine and approve or disapprove any operation other than "regular or routine maintenance", which the City may propose to perform on the area shown on said Exhibit "A".

PROVIDED FURTHER that the State reserves the right to inspect and either approve or disapprove maintenance work on any section in which Federal Funds have participated.

any such section should not meet recognized minimum requirements for maintenance of the type of street involved, then the State may, through its own forces bring said section up to the proper standards and the cost of the same shall be deducted from any

GM 445

monies due or to become due the City from its allocation of motor vehicle funds.

IN WITNESS WHEREOF, the parties have executed this agreement as of the day and year first above written.

(Seal)

City of Kirkland

William C. Woods
Mayor

ATTEST:

STATE OF WASHINGTON
WASHINGTON STATE HIGHWAY COMMISSION

Tom P. Adams
City Clerk

By: W. S. [Signature]
ASSISTANT DIRECTOR FOR STATE AID

Approved as to form:

January 2, 1969

William C. Adams
Assistant Attorney General

APPROVED
BY [Signature]
ASSISTANT
MAINTENANCE ENGINEER
DATE 1-17-69

GM 445



1. POINT OF ENTRY
 2. APPROXIMATE LOCATION
 3. DEED & CARRAN SURVAY TO NO. 10
 4. POINT OF ENTRY
 5. SUPPLEMENTARY PART TO DEED NO. 10
 6. DEED NO. 10 TO THE CITY OF ST. LOUIS

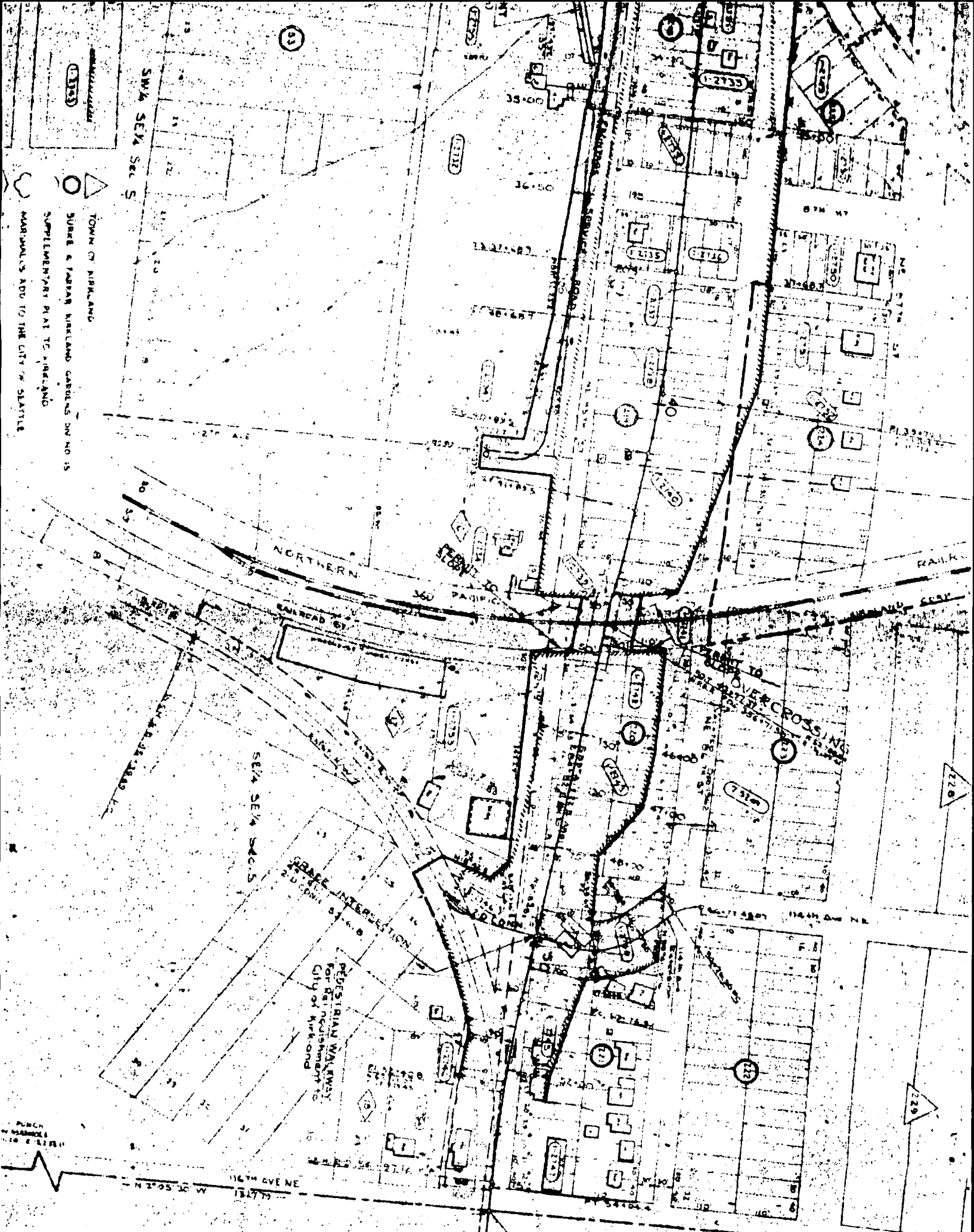
OWNERSHIP
 DEED NO. 10 TO THE CITY OF ST. LOUIS
 DEED NO. 11 TO THE CITY OF ST. LOUIS
 DEED NO. 12 TO THE CITY OF ST. LOUIS
 DEED NO. 13 TO THE CITY OF ST. LOUIS
 DEED NO. 14 TO THE CITY OF ST. LOUIS
 DEED NO. 15 TO THE CITY OF ST. LOUIS
 DEED NO. 16 TO THE CITY OF ST. LOUIS
 DEED NO. 17 TO THE CITY OF ST. LOUIS
 DEED NO. 18 TO THE CITY OF ST. LOUIS
 DEED NO. 19 TO THE CITY OF ST. LOUIS
 DEED NO. 20 TO THE CITY OF ST. LOUIS
 DEED NO. 21 TO THE CITY OF ST. LOUIS
 DEED NO. 22 TO THE CITY OF ST. LOUIS
 DEED NO. 23 TO THE CITY OF ST. LOUIS
 DEED NO. 24 TO THE CITY OF ST. LOUIS
 DEED NO. 25 TO THE CITY OF ST. LOUIS
 DEED NO. 26 TO THE CITY OF ST. LOUIS
 DEED NO. 27 TO THE CITY OF ST. LOUIS
 DEED NO. 28 TO THE CITY OF ST. LOUIS
 DEED NO. 29 TO THE CITY OF ST. LOUIS
 DEED NO. 30 TO THE CITY OF ST. LOUIS
 DEED NO. 31 TO THE CITY OF ST. LOUIS
 DEED NO. 32 TO THE CITY OF ST. LOUIS
 DEED NO. 33 TO THE CITY OF ST. LOUIS
 DEED NO. 34 TO THE CITY OF ST. LOUIS
 DEED NO. 35 TO THE CITY OF ST. LOUIS
 DEED NO. 36 TO THE CITY OF ST. LOUIS
 DEED NO. 37 TO THE CITY OF ST. LOUIS
 DEED NO. 38 TO THE CITY OF ST. LOUIS
 DEED NO. 39 TO THE CITY OF ST. LOUIS
 DEED NO. 40 TO THE CITY OF ST. LOUIS
 DEED NO. 41 TO THE CITY OF ST. LOUIS
 DEED NO. 42 TO THE CITY OF ST. LOUIS
 DEED NO. 43 TO THE CITY OF ST. LOUIS
 DEED NO. 44 TO THE CITY OF ST. LOUIS
 DEED NO. 45 TO THE CITY OF ST. LOUIS
 DEED NO. 46 TO THE CITY OF ST. LOUIS
 DEED NO. 47 TO THE CITY OF ST. LOUIS
 DEED NO. 48 TO THE CITY OF ST. LOUIS
 DEED NO. 49 TO THE CITY OF ST. LOUIS
 DEED NO. 50 TO THE CITY OF ST. LOUIS
 DEED NO. 51 TO THE CITY OF ST. LOUIS
 DEED NO. 52 TO THE CITY OF ST. LOUIS
 DEED NO. 53 TO THE CITY OF ST. LOUIS
 DEED NO. 54 TO THE CITY OF ST. LOUIS
 DEED NO. 55 TO THE CITY OF ST. LOUIS
 DEED NO. 56 TO THE CITY OF ST. LOUIS
 DEED NO. 57 TO THE CITY OF ST. LOUIS
 DEED NO. 58 TO THE CITY OF ST. LOUIS
 DEED NO. 59 TO THE CITY OF ST. LOUIS
 DEED NO. 60 TO THE CITY OF ST. LOUIS
 DEED NO. 61 TO THE CITY OF ST. LOUIS
 DEED NO. 62 TO THE CITY OF ST. LOUIS
 DEED NO. 63 TO THE CITY OF ST. LOUIS
 DEED NO. 64 TO THE CITY OF ST. LOUIS
 DEED NO. 65 TO THE CITY OF ST. LOUIS
 DEED NO. 66 TO THE CITY OF ST. LOUIS
 DEED NO. 67 TO THE CITY OF ST. LOUIS
 DEED NO. 68 TO THE CITY OF ST. LOUIS
 DEED NO. 69 TO THE CITY OF ST. LOUIS
 DEED NO. 70 TO THE CITY OF ST. LOUIS
 DEED NO. 71 TO THE CITY OF ST. LOUIS
 DEED NO. 72 TO THE CITY OF ST. LOUIS
 DEED NO. 73 TO THE CITY OF ST. LOUIS
 DEED NO. 74 TO THE CITY OF ST. LOUIS
 DEED NO. 75 TO THE CITY OF ST. LOUIS
 DEED NO. 76 TO THE CITY OF ST. LOUIS
 DEED NO. 77 TO THE CITY OF ST. LOUIS
 DEED NO. 78 TO THE CITY OF ST. LOUIS
 DEED NO. 79 TO THE CITY OF ST. LOUIS
 DEED NO. 80 TO THE CITY OF ST. LOUIS
 DEED NO. 81 TO THE CITY OF ST. LOUIS
 DEED NO. 82 TO THE CITY OF ST. LOUIS
 DEED NO. 83 TO THE CITY OF ST. LOUIS
 DEED NO. 84 TO THE CITY OF ST. LOUIS
 DEED NO. 85 TO THE CITY OF ST. LOUIS
 DEED NO. 86 TO THE CITY OF ST. LOUIS
 DEED NO. 87 TO THE CITY OF ST. LOUIS
 DEED NO. 88 TO THE CITY OF ST. LOUIS
 DEED NO. 89 TO THE CITY OF ST. LOUIS
 DEED NO. 90 TO THE CITY OF ST. LOUIS
 DEED NO. 91 TO THE CITY OF ST. LOUIS
 DEED NO. 92 TO THE CITY OF ST. LOUIS
 DEED NO. 93 TO THE CITY OF ST. LOUIS
 DEED NO. 94 TO THE CITY OF ST. LOUIS
 DEED NO. 95 TO THE CITY OF ST. LOUIS
 DEED NO. 96 TO THE CITY OF ST. LOUIS
 DEED NO. 97 TO THE CITY OF ST. LOUIS
 DEED NO. 98 TO THE CITY OF ST. LOUIS
 DEED NO. 99 TO THE CITY OF ST. LOUIS
 DEED NO. 100 TO THE CITY OF ST. LOUIS

EXHIBIT A

1762

KIRKLAND TO SGT SR 4 P

SR 901



TOWN OF KIRKLAND
 SUBRE & PARTIAL KIRKLAND CARBOLS SW NO 15
 SUPPLEMENTARY PLAT TO AIRCAND
 MARKINGS ADD TO THE CITY OF SEATTLE

PEDESTRIAN WALKWAY
 FOR RE-ACQUISITION TO
 City of Kirkland

END OF PLAN
 PLAN NO. 1762
 SHEET 1 OF 25

EXHIBIT A

CS 1762 SR 901
 KIRKLAND TO TCT SR 400

GM 445

For RW & JA at/dod see PSN No. 1 (SR.005)
 Northup interchange to N 160th St
 Sheet 7 of 25 sheets approved April 17 1967

MAINTENANCE AGREEMENT

THIS AGREEMENT, made and entered into this 16th day of January, 1969, by and between the State of Washington, Washington State Highway Commission, acting through the Director of Highways, hereinafter called the "State" and the Kirkland City Council acting by and through the Mayor of the City of Kirkland and hereinafter referred to as the "City".

WITNESSETH:

WHEREAS, the State has constructed and completed SR 520; east approach to Evergreen Point Bridge, 92nd Avenue N. E. to Bellevue City Limits, to the mutual benefit of the State and the City; and

WHEREAS, Chapter 235, Section 4, (5), Laws of 1957 provides that, "The construction and maintenance of city streets over and under crossings and surface intersections of the limited access facilities shall be in accordance with the governing policy entered into between the State Highway Commission and the Association of Washington Cities".

NOW, THEREFORE, the City agrees upon completion of construction and upon written notification by the State to perform all necessary maintenance on all those sections of state constructed city streets as shown in red or otherwise indicated on Exhibit "A" attached hereto and by this reference made a part of this agreement.

PROVIDED, HOWEVER, that the State reserves the right to examine and approve or disapprove any operation other than "regular or routine maintenance", which the City may propose to perform on the area shown on said Exhibit "A".

PROVIDED FURTHER that the State reserves the right to inspect and either approve or disapprove maintenance work on any section in which Federal Funds have participated.

GM 446

2

If any such section should not meet recognized minimum requirements for maintenance of the type of street involved, then the State may, through its own forces bring said section up to the proper standards and the cost of the same shall be deducted from any monies or to become due the City from its allocation of motor vehicle funds.

IN WITNESS WHEREOF, the parties have executed this agreement as of the day and year first above written.

(Seal)

City of Kirkland as Successor to
City of Houghton

William C. Hoods
Mayor

ATTEST:

Tom A. Deason
City Clerk

STATE OF WASHINGTON
WASHINGTON STATE HIGHWAY COMMISSION

By: W. B. ...
Director of Highways
ASSISTANT DIRECTOR FOR STATE AID

Approved as to form:

January 2, 1962
William E. Howard
Assistant Attorney General

APPROVED
BY [Signature]
ASSISTANT
MAINTENANCE ENGINEER
DATE [Signature]

GM 446

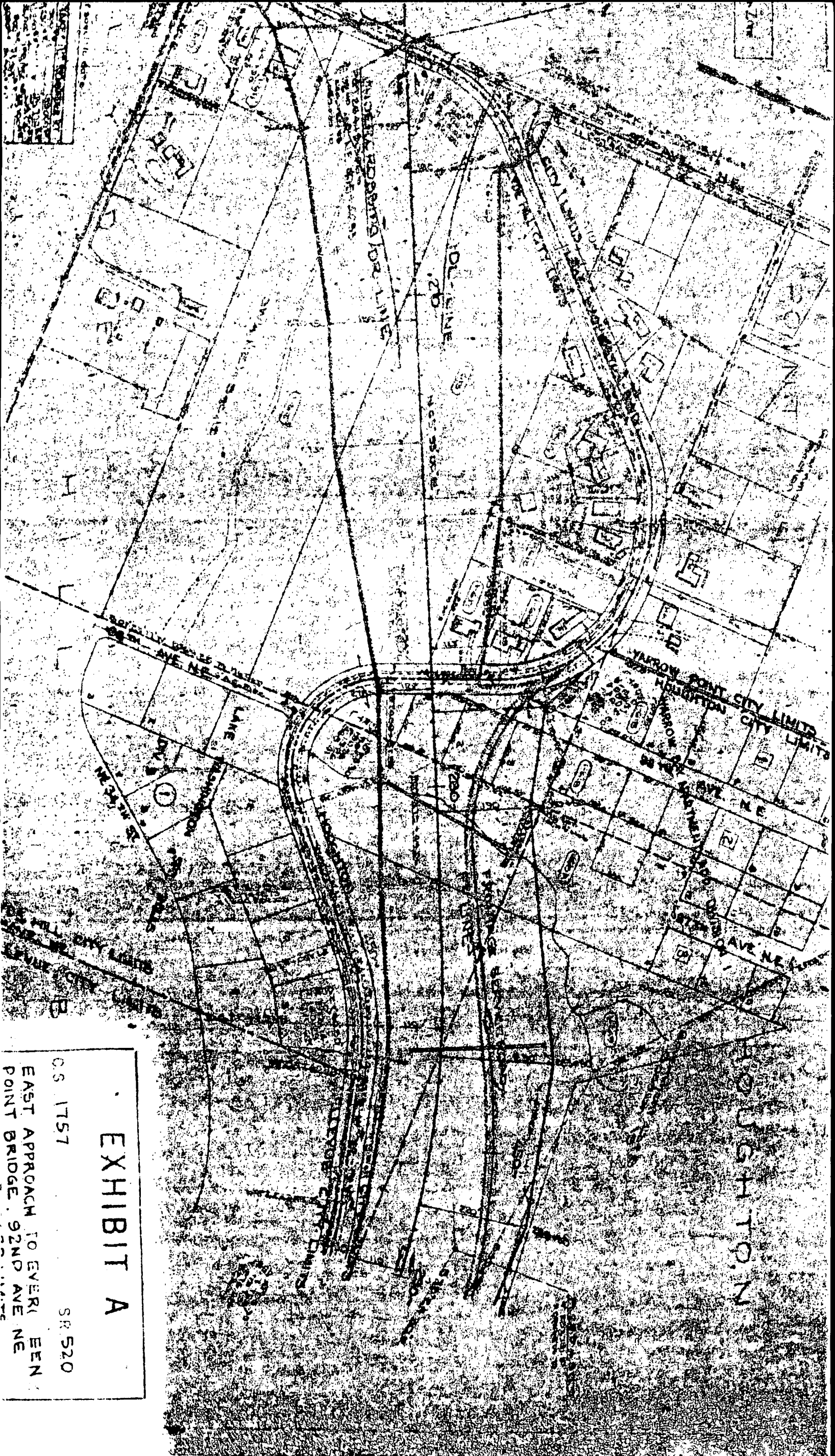


EXHIBIT A

OS 1757

SR 520

EAST APPROACH TO EVERETT EEN
POINT BRIDGE, 92ND AVE NE

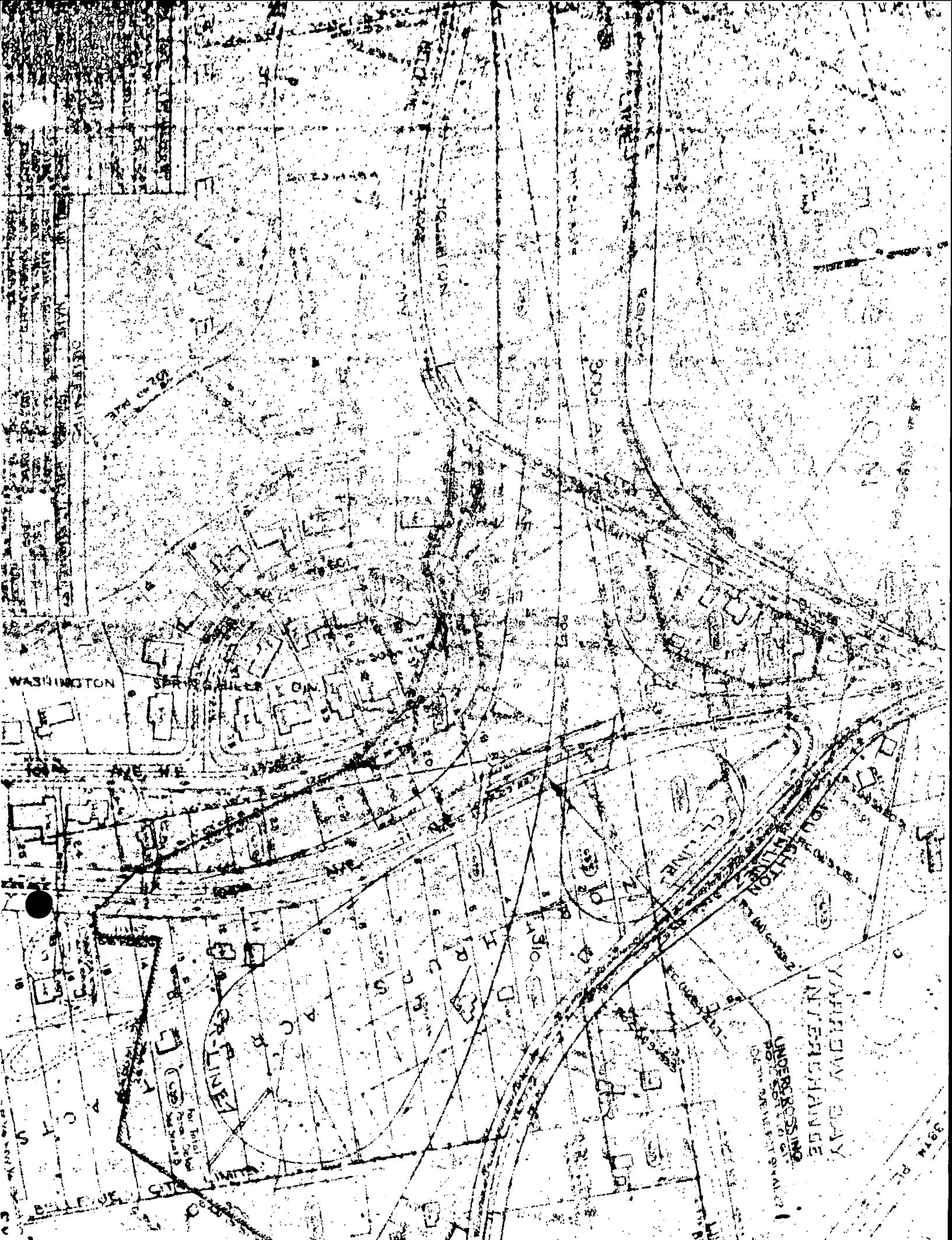


EXHIBIT A

OS 1757

SR 520

EAST APPROACH TO EVERGREEN
POINT BRIDGE 3210 AVE NE
TO BELLEVUE CRP LIMITS

446

AGREEMENT NO 6M

STAGE 4 ADD.
END OF PLAN

LIMITS BELLEVUE CITY UNITS

WINDOW BAY
UNDERPASSING
NO. 3210 AVE NE
ST. 1757

WASHINGTON

SPRINGFIELD

GR LINE

LIMITS BELLEVUE CITY UNITS

LIMITS BELLEVUE CITY UNITS