

RESOLUTION #415

LIMITED ACCESS

WHEREAS, the Director of Highways, on March 8 19 48, established limited access on a portion of Secondary State Highway No 2-A, described as follows:

Between a junction with PSH 2 in the vicinity of Renton and a junction with PSH 2 in the vicinity of Bothell

and,

WHEREAS, the Director of Highways intends to improve the highway through a portion of the said established limited access, and,

WHEREAS, all or part of the proposed highway improvement lies within the City of Kirkland,

NOW, THEREFORE, BE IT RESOLVED that, in accordance with the provisions of Chapter 202, Laws of 1947, as revised and amended by Chapter 167, Laws of 1951, the City of Kirkland, acting through its officers and authorities, does hereby consent to the establishment of limited access as shown on the plans entitled "Secondary State Highway No. 2-A, Midlakes to Kirkland (Sheet 2 & 3), Plan Showing Access", approved by the Director of Highways on July 1, 1952, a print of which is attached hereto and made a part of this resolution.

Adopted by the Council of City of Kirkland this 21st day of July
19 52. Washington

/s/ Alfred E. Leland
Mayor

SEAL

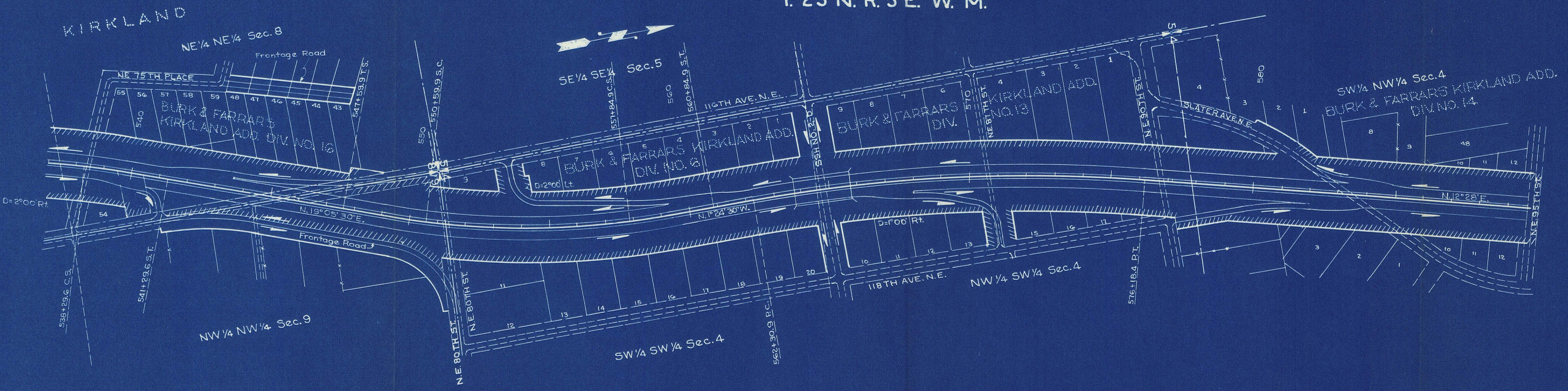
Attest:

/s/ Loren L. Fitch Clerk

Rev. April 10, 1951

T. 25 N. R. 5 E. W. M.

FED. ROAD DIV. NO.	STATE	FED. AID PROJ. NO.	FISCAL YEAR	SHEET NO.	TOTAL SHEETS
8	WASH.				



Designing Engineer	
Designed	
Checked	
Quantity Figured	
Quantity Checked	

Drawn	
Traced	
Checked	
Dist. Eng.	
By	E.R.V.
Date	June 42

NOTE:
Access to be prohibited, and access rights from abutting property to be secured shown thus: [diagonal hatching symbol]



SECONDARY STATE HIGHWAY NO. 2-A
MID LAKES TO KIRKLAND
PLAN SHOWING ACCESS
KING COUNTY

WASHINGTON STATE HIGHWAY COMMISSION
DEPARTMENT OF HIGHWAYS
OLYMPIA, WASHINGTON
SCALE: 1 INCH = 200 FEET
APPROVED: July 1, 1952

W. A. Bugee
DIRECTOR OF HIGHWAYS