

ORDINANCE NO. . 4084

AN ORDINANCE OF THE CITY OF KIRKLAND RELATING TO COMPREHENSIVE PLANNING AND LAND USE AND AMENDING THE COMPREHENSIVE PLAN (ORDINANCE 3481 AS AMENDED) AS REQUIRED BY RCW 36.70A.130 TO ENSURE CONTINUED COMPLIANCE WITH THE GROWTH MANAGEMENT ACT, FILE NO. ZON06-00009, AND APPROVING A SUMMARY FOR PUBLICATION.

WHEREAS, the Growth Management Act (GMA), RCW 36.70A.215, mandates that the City of Kirkland review, and if needed, revise its Comprehensive Plan pursuant to RCW 36.70A.130; and

WHEREAS, the City Council included a clause in Ordinance 4079 adopted on December 12, 2006, to extend the 2006 Comprehensive Plan process to no later than February 20, 2007, to consider minor housekeeping amendments to the Comprehensive Plan needed to change the land use designations of park use and low density residential use for the proposed land exchange between Mark Twain Park and Parcel No 3326059178 at 10522-130<sup>th</sup> Ave NE; and

WHEREAS, the City Council has received a recommendation from the Kirkland Planning Commission to amend certain portions of the Comprehensive Plan for the City, Ordinance 3481 as amended, all as set forth in that certain report and recommendation of the Planning Commission dated January 25, 2007, and bearing Kirkland Department of Planning and Community Development File No. ZON06-00009; and

WHEREAS, prior to making said recommendation the Planning Commission, following notice thereof as required by RCW 35A.63.070, held a public hearing on January 25, 2007, on the amendment proposals; and

WHEREAS, pursuant to the State Environmental Policy Act (SEPA), there has accompanied the legislative proposal and recommendations a SEPA Addendum to Existing Environmental Documents issued by the responsible official pursuant to WAC 197-11-600(4); and

WHEREAS, in regular public meeting the City Council considered the environmental documents received from the responsible official, together with the report and recommendation of the Planning Commission; and

NOW, THEREFORE, BE IT ORDAINED by the City Council of the City of Kirkland as follows:

Section 1. Text Amended: The Comprehensive Plan, Ordinance 3481, as amended, is amended by this reference and as set forth in Attachment A.


Section 2. Severability: If any section, subsection, sentence, clause, phrase, part or portion of this ordinance, including those parts adopted by reference, is for any reason held to be invalid or unconstitutional by any court of competent jurisdiction, such decision shall not affect the validity of the remaining portions of this ordinance.

Section 3. Effective Date: This ordinance shall be in full force and effect five days from and after its passage by the City Council and publication, pursuant to Kirkland Municipal Code 1.08.017, in the summary form attached to the original of this ordinance and by this reference approved by the City Council as required by law.


Section 4. Ordinance Copy: A complete copy of this ordinance shall be certified by the City Clerk, who shall then forward the certified copy to the King County Department of Assessments.

Passed by majority vote of the Kirkland City Council in open meeting this 6th day of February, 2007.


SIGNED IN AUTHENTICATION THEREOF this 6th day of February, 2007.

  
\_\_\_\_\_  
Mayor

Attest:

  
\_\_\_\_\_  
City Clerk

Approved as to Form:

  
\_\_\_\_\_  
City Attorney



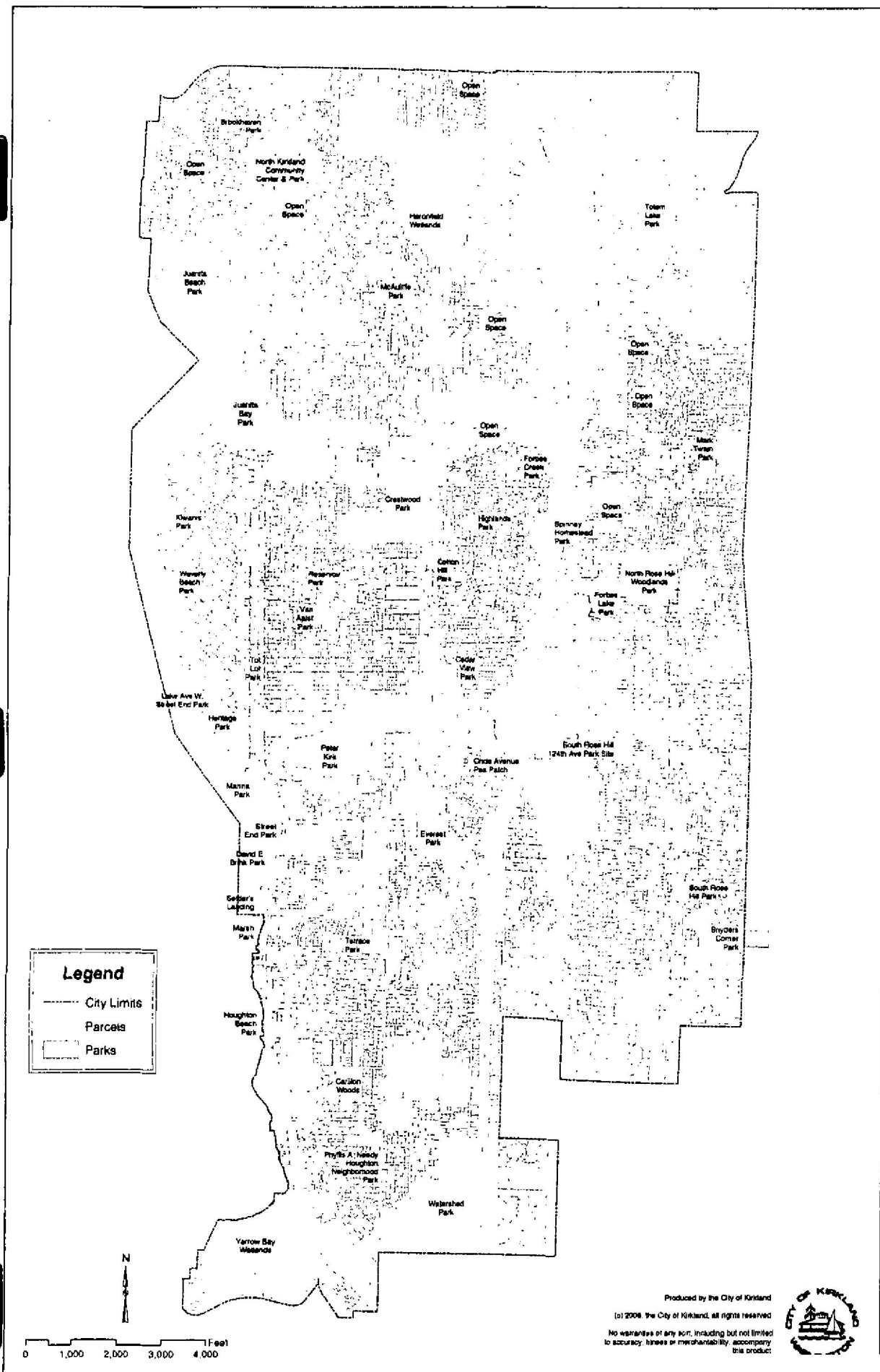
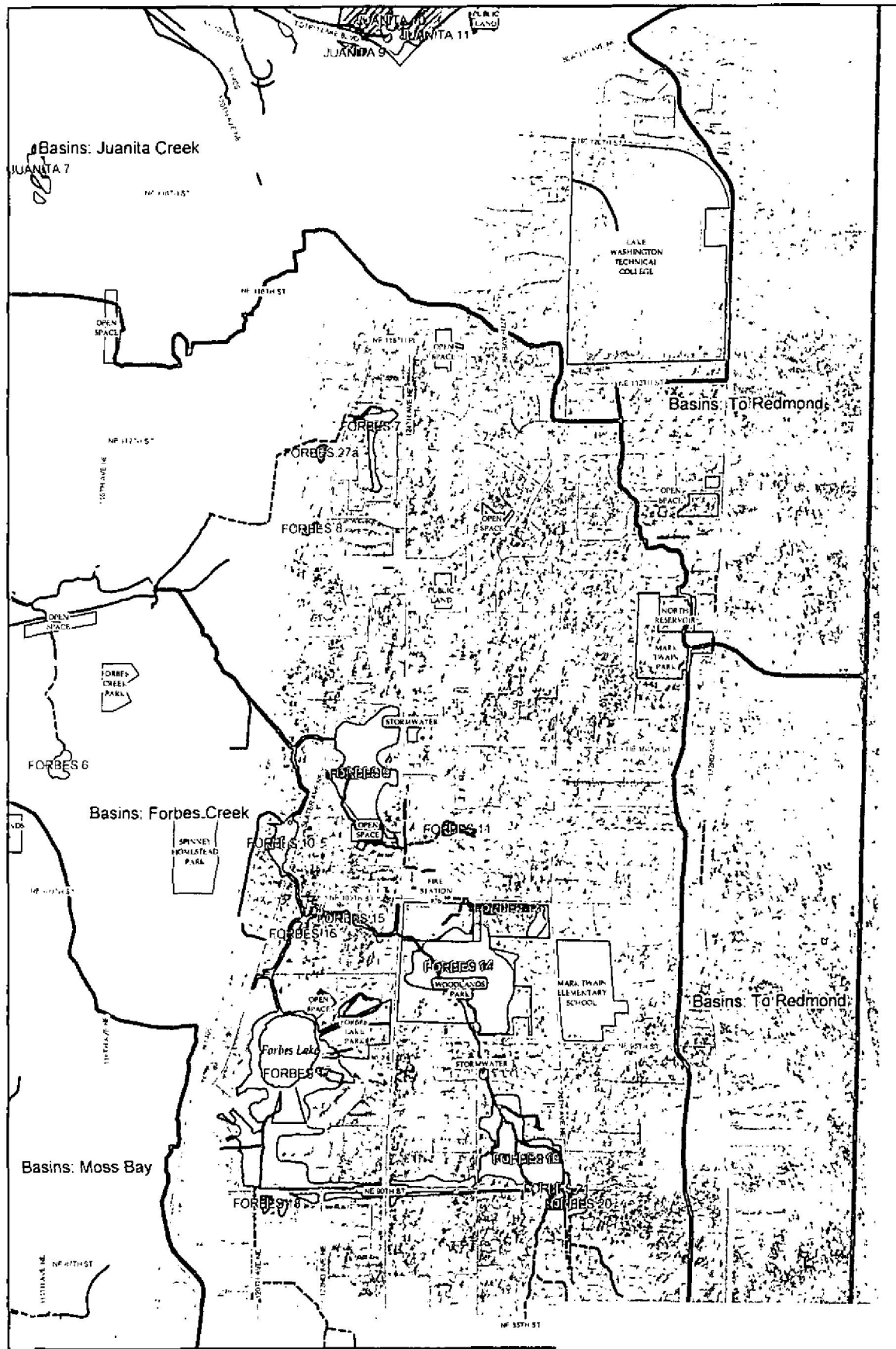


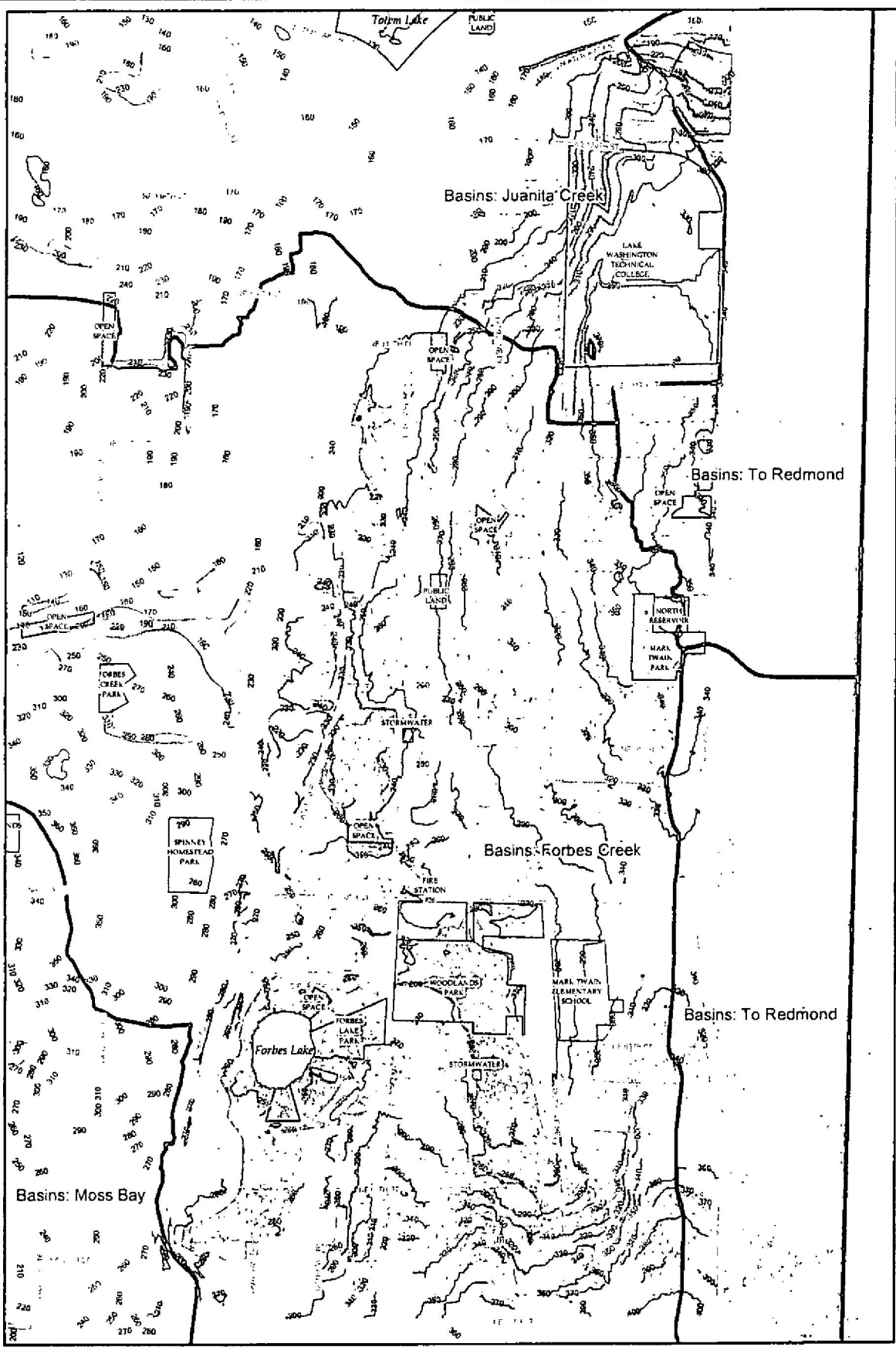
Figure PR-1: Kirkland Parks



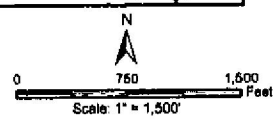
- Legend**
- Known Salmonid Locations
  - Streams in Pipes
  - Open Streams
  - 100-Year Floodplain
  - Wetlands
  - Shoreline of Statewide Significance
  - Drainage Basin Boundaries
  - Selected Public Properties
  - Lakes

No warranties of any sort, including but not limited to accuracy, fitness for use, or merchantability, accompany this product.

**Figure NRH-2: North Rose Hill Sensitive Areas**



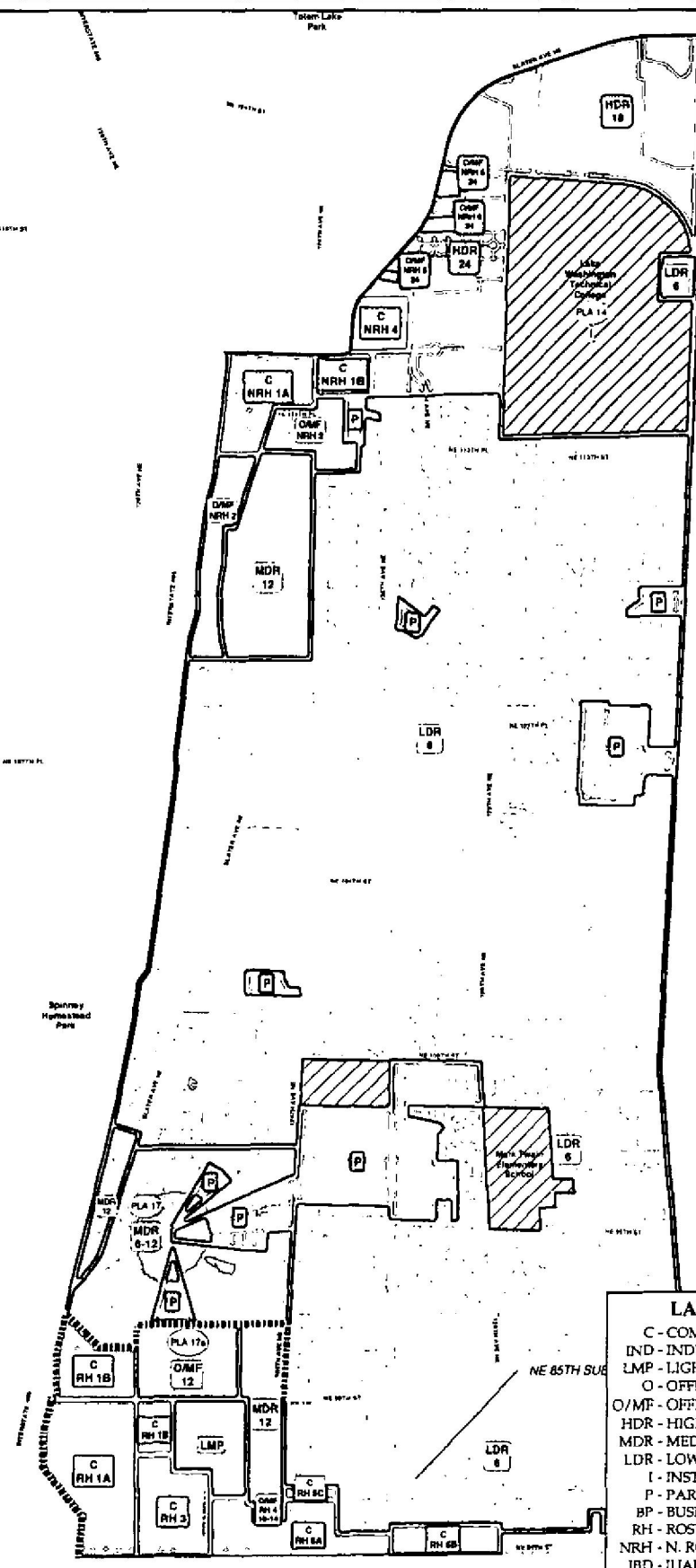
- Legend**
- Landslide Hazard Area (Medium Hazard)
  - Landslide Hazard Area (High Hazard)
  - Seismic Hazard Area
  - Twenty-Foot Contours
  - Drainage Basin Boundaries
  - Selected Public Properties
  - Lakes



Prepared by the City of Kirkland  
 © 2008 the City of Kirkland all rights reserved.  
 No warranties of any sort, including but not limited to accuracy, fitness or merchantability, accompany this product.

**Figure NRH-3: North Rose Hill Seismic and Landslide Hazards**

Wentfield Islands  
 Alexander Graham Bell Elementary School  
 Forbes Creek Park  
 Highlands Park  
 Spurrey Homestead Park  
 Cotton Hill Park  
 Cedar View Park



**LAND USE CODES**

- C - COMMERCIAL
- IND - INDUSTRIAL
- LMP - LIGHT MANUFACTURING PARK
- O - OFFICE
- O/MP - OFFICE/MULTI-FAMILY
- HDR - HIGH DENSITY RESIDENTIAL
- MDR - MEDIUM DENSITY RESIDENTIAL
- LDR - LOW DENSITY RESIDENTIAL
- I - INSTITUTIONS
- P - PARK/OPEN SPACE
- BP - BUSINESS PARK
- RH - ROSE HILL BUSINESS DISTRICT
- NRH - N. ROSE HILL BUSINESS DISTRICT
- JBD - JUANITA BUSINESS DISTRICT

Figure NRH-4

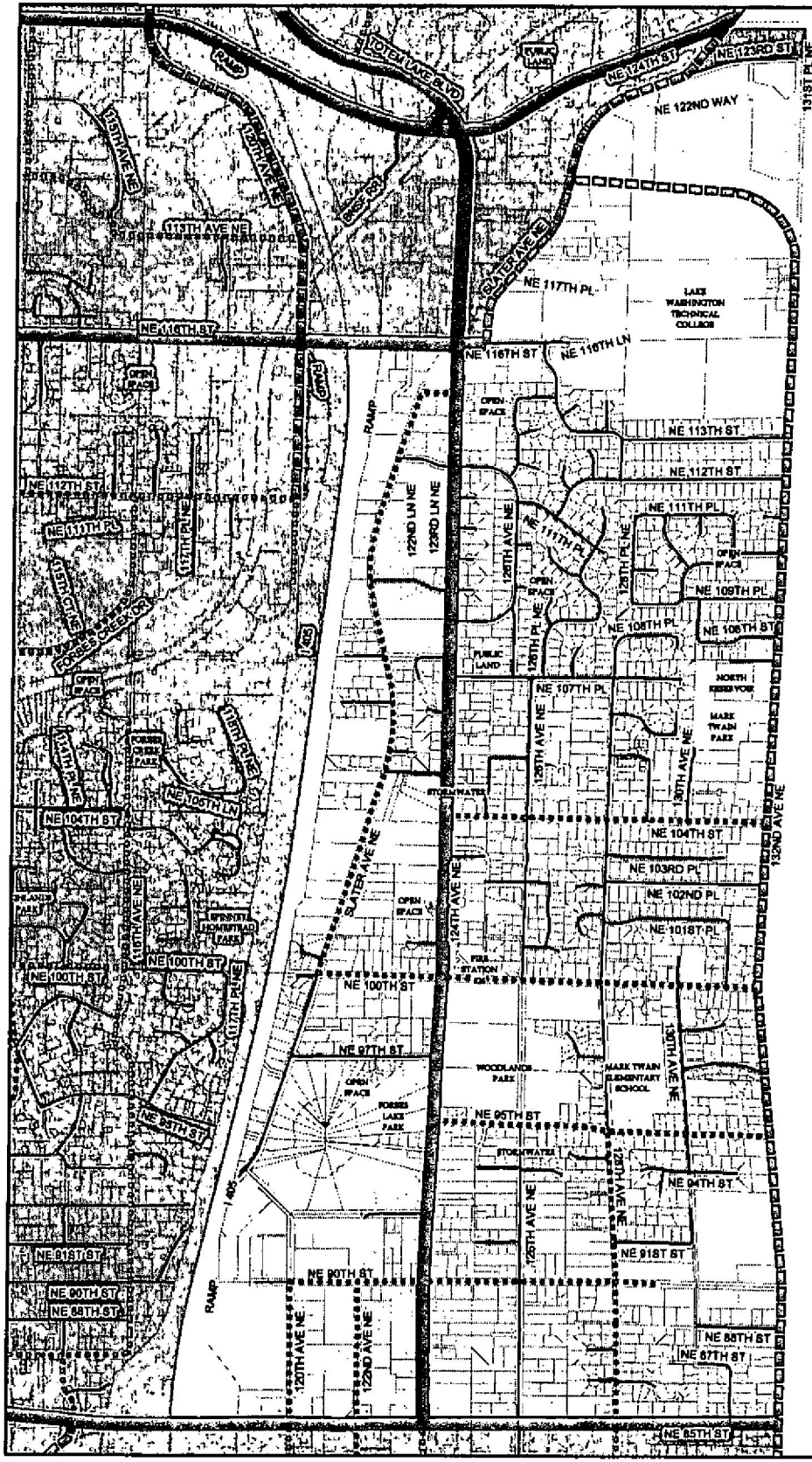
# North Rose Hill Neighborhood Land Use Map

ORDINANCE NO. 4079  
 ADOPTED by the Kirkland City Council  
 December 12, 2006

|                     |                       |
|---------------------|-----------------------|
| LAND USE BOUNDARIES | PARC                  |
| SUBAREA BOUNDARY    | PLA PLAN              |
| TOTEM CENTER        | LDR 5                 |
| PUBLIC FACILITIES   | NOTE: WHERE INDICATED |

Produced by the City of Kirkland. (c) 2006, the City of Kirkland, all rights reserved.  
 No warranties of any sort, including but not limited to accuracy, fitness or merchantability, accompany this product.

Feet



**Legend**

**Functional Classifications**

- Neighborhood Access
- Collector
- Minor Arterial
- Principal Arterial

**Building Footprints**

- Tax Parcel Boundaries

N

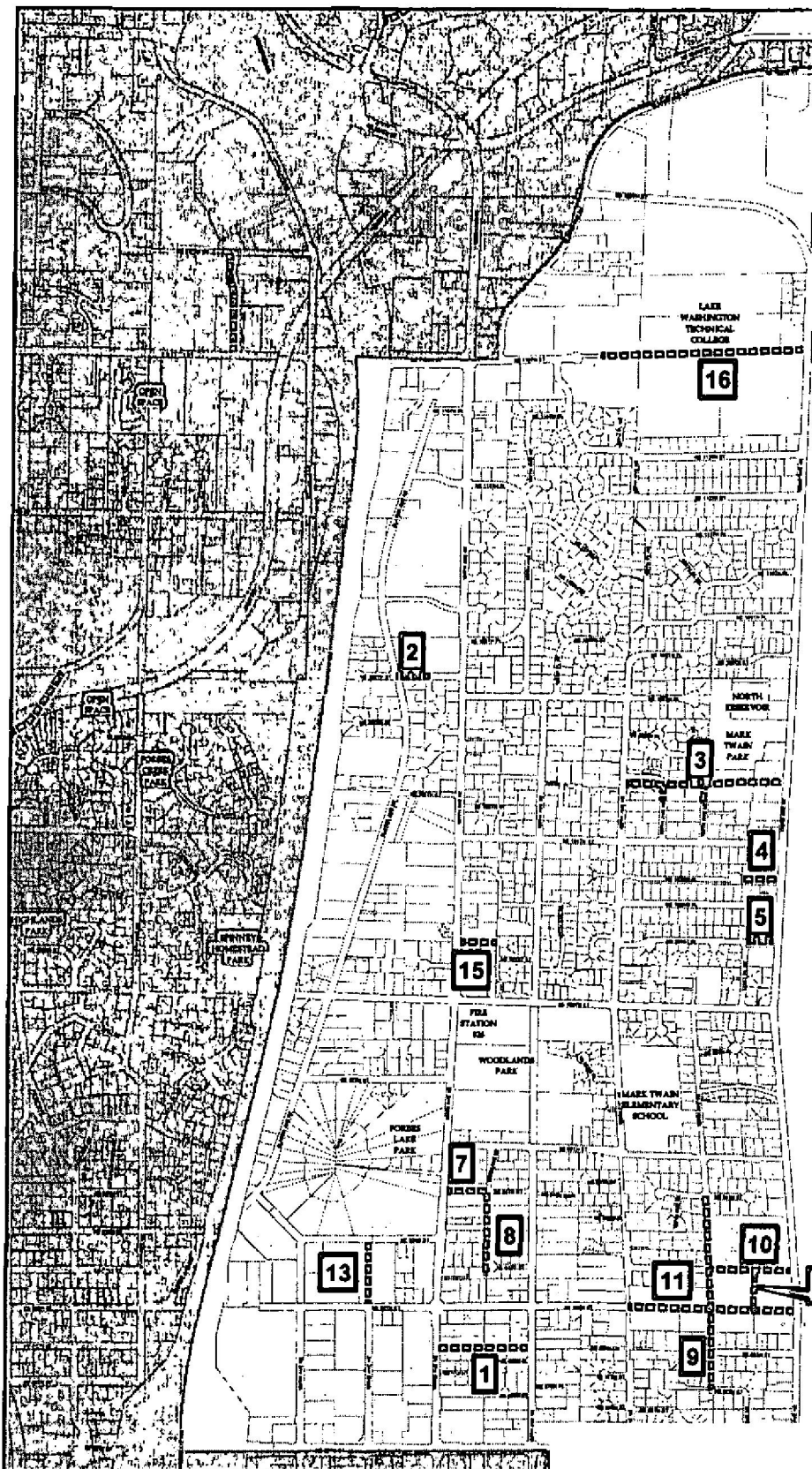
0 700 1400 Feet

Scale: 1" = 1400'

Produced by the City of Kirkland  
 © 2006, the City of Kirkland. All rights reserved.  
 No representation or warranty, including but not limited  
 to accuracy, timeliness or completeness, is made by the City of Kirkland.  
 12/31/2006 10:00 AM C:\Program Files\MapInfo\MapInfo\MapInfo.exe

**Figure NRH-5: North Rose Hill Functional Classifications**

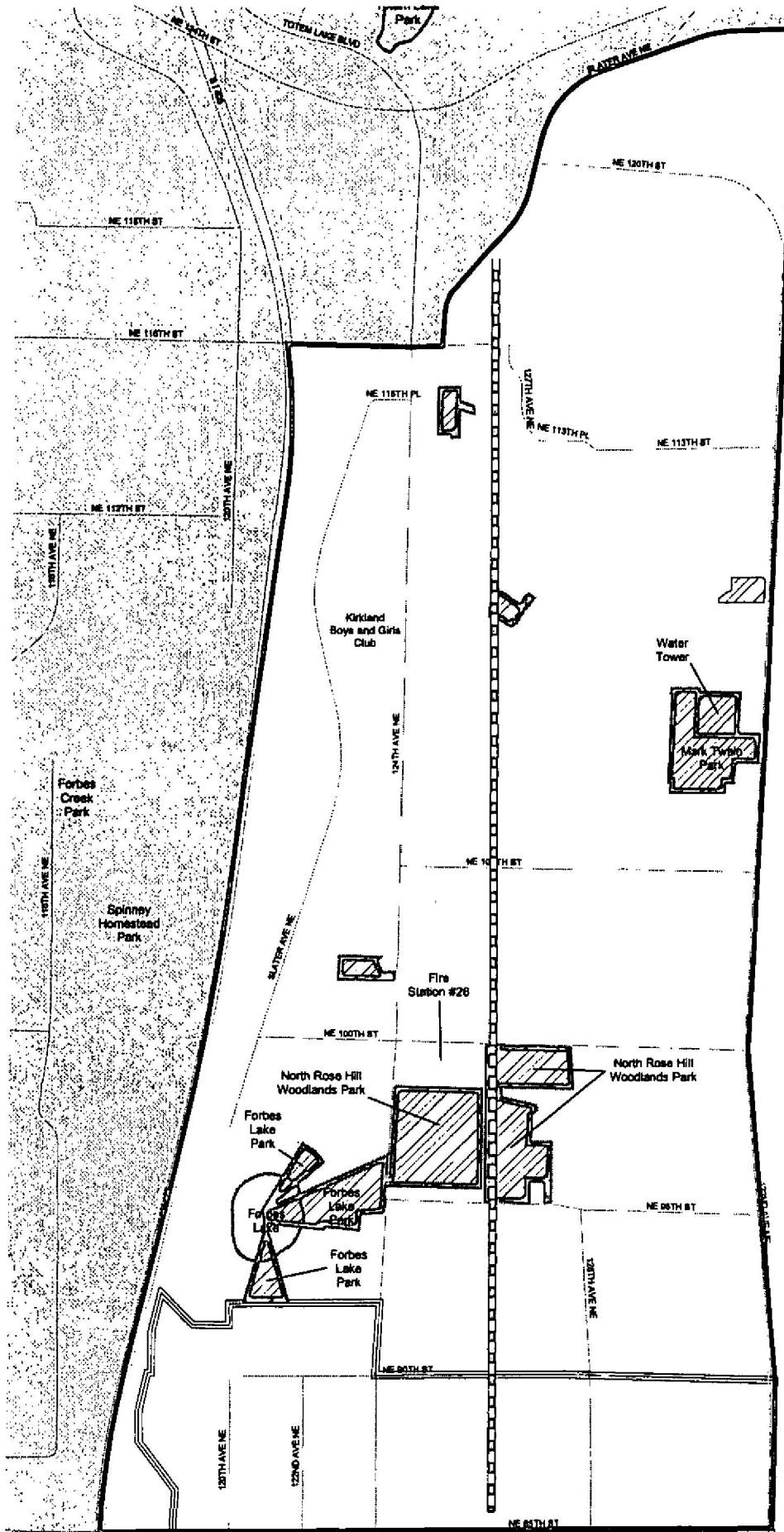





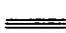


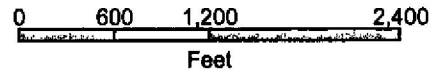
- Legend**
- ▣▣▣ Potential Street Connections
  - ▭▭▭ Building Footprints
  - ▭▭▭ Tax Parcel Boundaries

**Figure NRH-6: North Rose Hill Street Connection Plan**

# North Rose Hill Neighborhood Parks and Open Space



-  Parks/Open Space
-  City Owned Property
-  Seattle City Light Powerline Easement Trail
-  NE 85th Subarea Boundary



PUBLICATION SUMMARY  
OF ORDINANCE NO. 4084

AN ORDINANCE OF THE CITY OF KIRKLAND RELATING TO COMPREHENSIVE PLANNING AND LAND USE AND AMENDING THE COMPREHENSIVE PLAN (ORDINANCE 3481 AS AMENDED) AS REQUIRED BY RCW 36.70A.130 TO ENSURE CONTINUED COMPLIANCE WITH THE GROWTH MANAGEMENT ACT, FILE NO. ZON06-00009

Section 1. Amends the Comprehensive Plan as set forth in Attachment A.

Section 2. Provides a severability clause for the ordinance.

Section 3. Authorizes publication of the ordinance by summary, approval of the summary by the City Council pursuant to Kirkland Municipal Code 1.08.017, and establishes the effective date as five days after publication of summary.

Section 4. Provides that the City Clerk shall forward a certified copy of the ordinance to the King County Department of Assessments.

The full text of this Ordinance will be mailed without charge to any person upon request made to the City Clerk for the City of Kirkland. The ordinance was passed by the Kirkland City Council at its regular meeting on the 6th day of February, 2007.

I certify that the foregoing is a summary of Ordinance 4084 approved by the Kirkland City Council for summary publication.

  
City Clerk