

RESOLUTION R-5486

A RESOLUTION OF THE CITY COUNCIL OF THE CITY OF KIRKLAND ADOPTING THE 2020 PARKS AND COMMUNITY SERVICES ANNUAL REPORT.

1 WHEREAS, in November 2012, Kirkland voters approved Proposition 2
2 – Levy for City Parks Maintenance, Restoration and Enhancement (“Park
3 Levy”); and
4

5 WHEREAS, Ordinance No. 4365 adopted by the Kirkland City Council to
6 place Proposition 2 on the ballot described the restricted uses for the funding
7 as well as the requirement to produce an annual accountability report
8 documenting actions and the status of the programs funded by the Park Levy;
9 and
10

11 WHEREAS, the submitted 2020 Parks and Community Services Annual
12 Report reflects the allocation of Park Levy funds to: 1) park maintenance and
13 operations (approximately \$2 million); and 2) annual investment of
14 approximately \$1.25 million for park capital projects; and
15

16 WHEREAS, City Council desires to provide information and
17 accountability to the community on how Park Levy funds were spent and this
18 report demonstrates completion of the Juanita Beach Bathhouse project, Edith
19 Moulton Park improvements, upgrades to Big Finn Hill Middle School playfield
20 and Peter Kirk Elementary playfield, the restoration of beach services, land
21 acquisitions, funding of the Green Kirkland Partnership and a significant shift
22 of Park Levy money to operations on order to maintain these new facilities, and
23

24 WHEREAS, the City Council desires to adopt the 2020 Parks and
25 Community Services Annual Report;
26


27 NOW, THEREFORE, be it resolved by the City Council of the City of
28 Kirkland as follows:
29

30 Section 1. The Kirkland City Council adopts the 2020 Park Levy
31 Accountability Report attached as Attachment 2 and incorporated by this
32 reference.
33

34 Section 2. The Kirkland City Council authorizes the posting of the 2020
35 Parks and Community Services Annual Report on the City website and the
36 distribution of the Report through community meetings.
37

38 Passed by majority vote of the Kirkland City Council in open meeting
39 this 20 day of July, 2021.
40

41 Signed in authentication thereof this 20 day of July, 2021.


Penny Sweet, Mayor

Attest:


Kathi Anderson, City Clerk

KIRKLAND

Parks and Community Services

*2020 Annual Report and
Accountability Report on the Park Levy*





KIRKLAND PARKS AND COMMUNITY SERVICES

**PARKS MANAGEMENT | RECREATION | HUMAN SERVICES | SPECIAL EVENTS
ADMINISTRATION | PARK PLANNING AND DEVELOPMENT**

Our mission is to support a healthy and sustainable community by providing high quality parks and recreation services, ensuring a collaborative community response to basic human needs, and protecting our natural areas.



58 Employees (56.5 FTE)



**52 Parks, 20 Open Space Parcels
697 Total Acres**



3 Swimming Beaches



Peter Kirk Pool



**North Kirkland and Peter Kirk
Community Centers**



Heritage Hall



Kirkland Cemetery



8 City/School Playfields



**Human Services Support
Totaling Nearly \$1.5 million**



Alternate Formats: Persons with disabilities may request materials in alternative formats. Persons with hearing impairments may access the Washington State Telecommunications Relay Service at 711. **Title VI:** It is the City of Kirkland's policy to ensure full compliance with Title VI of the Civil Rights Act of 1964 by prohibiting discrimination against any person on the basis of race, color, national origin or sex in the provision of benefits and services resulting from programs and activities. Any person who believes his/her Title VI protection has been violated, may file a complaint with the City of Kirkland.

To request an alternate format or for questions about Kirkland's Title VI Program please call 425-587-3011 or email titlevicordinator@kirklandwa.gov

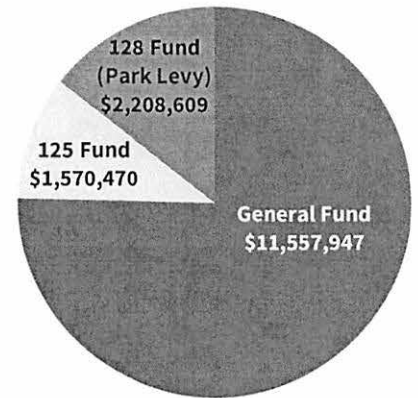
PARK LEVY OVERVIEW

KIRKLAND VOTERS approved the permanent Parks Levy (128 Fund) in November 2012 to restore funding for daily park maintenance and summer beach lifeguards, to formalize the Green Kirkland Partnership, and to provide resources for identified major capital improvement projects and land acquisitions. The levy raises approximately \$2.5 million annually to provide funding for these objectives.

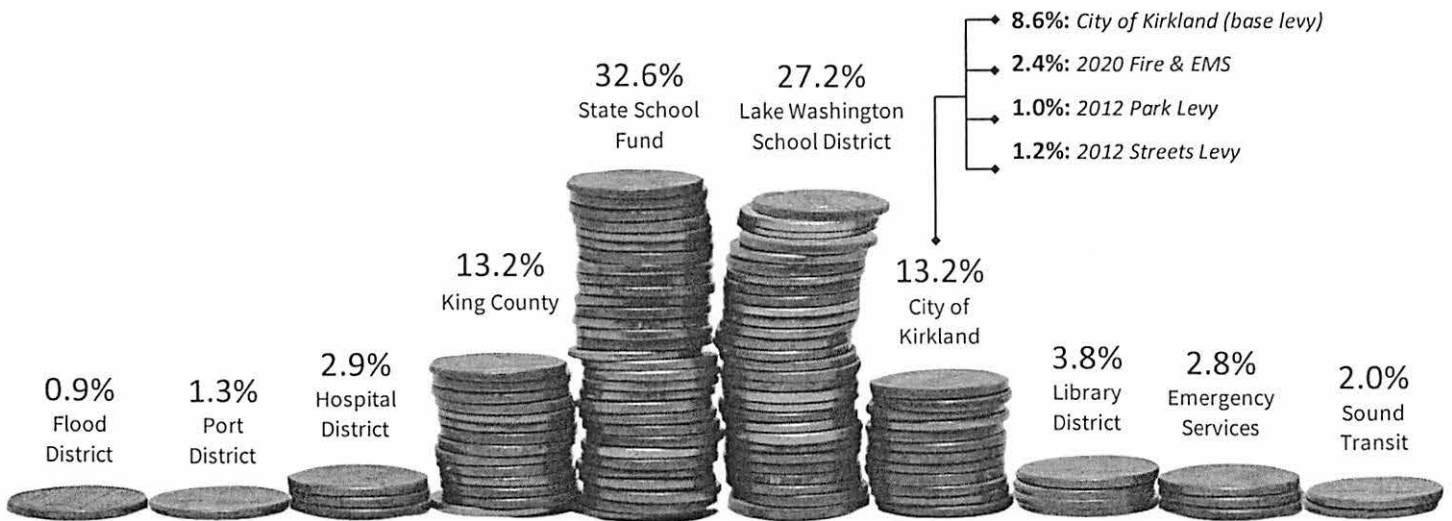
For the first six years (2013-2018), half of the levy funding was dedicated to the Parks Capital Improvement Program (CIP) to complete major repairs and site renovations at parks throughout the community. Priority projects identified in the levy ordinance include the following:

- Playfield upgrades at select school sites – **complete**
- Replacement of the Juanita Beach Park bathhouse – **complete**
- Planning for development of the Cross Kirkland Corridor – **complete**
- Renovations to Waverly Beach Park and Edith Moulton Park – **complete**
- Park land acquisition for future neighborhood parks – **several acquisitions made**
- Docks and shoreline repairs in many of the City’s waterfront parks – **in progress**

The chart below shows how the levy contributes to the overall department budget



WHERE PROPERTY TAXES GO



The 2012 Park levy accounts for just 1 percent of Kirkland residents’ property taxes, and yet it pays for more than 9% of the city’s park improvement projects and makes up 30% of the department’s budget for park maintenance and operations.

COVID-19 RESPONSE



WITH THE FIRST CONFIRMED COVID-19 death in the US happening in Kirkland in early March 2020, the Parks and Community Services department quickly shifted priorities to support the city-wide response. Staff worked in the City's Emergency Operations Center (EOC) and supported EOC operations by sourcing and purchasing much needed resources, delivering items to various city facilities, and storing supplies at the Parks Maintenance Center.

Beginning in March, community centers were closed, and recreation programs were cancelled. Shortly thereafter, the department closed park playgrounds, sports courts, athletic fields, picnic shelters and restrooms to discourage people from gathering in close proximity. Support of the city's response continued as the year progressed. Staff developed and posted signs related to COVID-19 throughout all parks and trails to educate about COVID-19, encourage social distancing, and let patrons know which facilities were closed. Additionally, staff developed the Park and Beach Ambassador programs to encourage social distancing, promote virtual programs, answer questions, and provide other information to park goers.

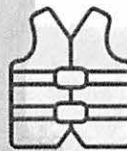
14,000 FACEMASKS

Staff distributed over 14,000 facemasks to park users during the summer



LIFEJACKETS 1,100

Beach Ambassadors provided over 1,100 loaner lifejackets across three swimming beaches



3,000 AMBASSADOR HOURS

Staff worked 3,000 hours as Park and Beach Ambassadors to inform and educate and provide customer service to park users



500+ BANNERS AND SIGNS

Over 500 signs and banners were installed throughout the parks to inform and educate park users



CAPITAL PROJECTS

THE PARK LEVY provides over \$1 million per year for major renovations and enhancements to Kirkland’s park system. Since the levy was passed, funding has been used to complete several major projects, including enhancements of the playfields at Finn Hill Middle School and Peter Kirk Elementary School, the development of Edith Moulton Park, and improvements at Waverly Beach Park. In 2020 significant progress was made on several major park projects as well as numerous improvements throughout the city.

JUANITA BEACH PARK: The levy contributed funding to the replacement of the Juanita Beach Bathhouse, installation of two new picnic shelters and an all-inclusive playground. Construction began on the park renovation in early 2020. Under COVID restrictions, the project was completed, and the park was opened to the public in December 2020.

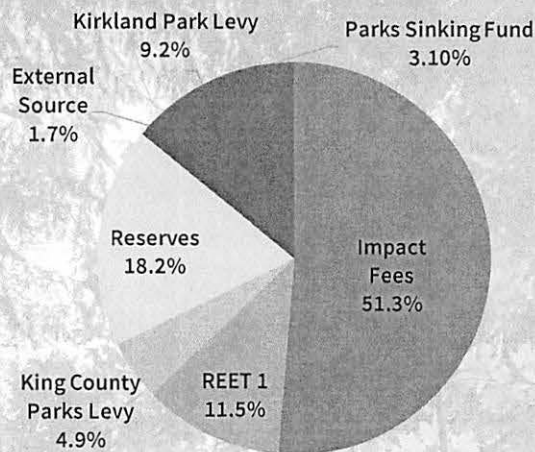
TOTEM LAKE PARK: The City will create a new park in the heart of Totem Lake. The park will include pathways, an inclusive playground, restrooms, scenic view locations, environmental restoration and a boardwalk connecting the park through the eastern side of the lake property to the Cross Kirkland Corridor. Construction of the park began in 2020 and will be completed July 2021.

132ND SQUARE PARK: Design work for the park renovation was completed in 2020. This project is planned in collaboration with the Surface Water Division of Public Works. The City will install a surface water detention structure, a synthetic turf field, two new picnic shelters, a new playground, and several other park enhancements. Construction will begin in 2021 and will be completed by summer 2022.

DAVID BRINK PARK: The City of Kirkland is renovating David Brink Park to improve access, safety, and habitat. The City is improving safety and access for community members by removing its failing bulkhead, expanding its beaches and by repairing sections of the park's sidewalks and piers. The project completed 100% design and received all outside agency permits. Project bidding is anticipated in early 2021.

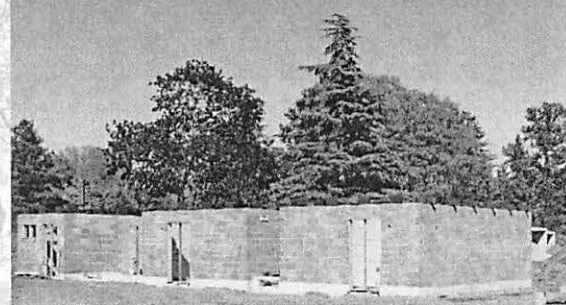
PARK LAND ACQUISITION: Land acquisitions to plan for growth and to protect important natural resources are funded from the levy. New park land acquired in 2020 included a 0.83-acre parcel within the Green Loop Corridor on Finn Hill.

Funding Sources for 2019 - 2024 Capital Improvement Program



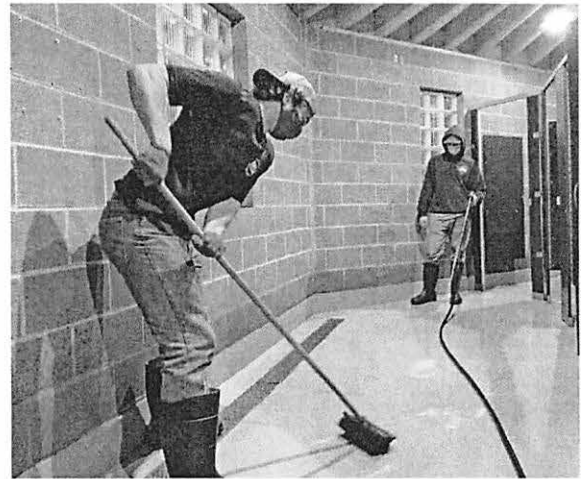
Juanita Beach Park Bathhouse

Groundbreaking (top), Construction (middle), Completed Bathhouse (bottom)



PARKS MANAGEMENT

THE 2012 LEVY increased maintenance levels by restoring funding for labor, tools, supplies, materials, and utilities. The Park Levy supports the operation of the Park Management division. Not only does it provide funding for staff, but it also supports the general operations of the entire division. In 2019, the Green Kirkland Partnership (GKP) was aligned with the Park Management Division; a move that provides more resources and support for the overall goal of conserving and restoring Kirkland's natural areas in parks by replacing invasive plants with native species for the sustainability of urban forests, wetlands and other habitats. 2020 brought unprecedented challenges to the team. Parks were more crowded than ever as people sought out opportunities to get outside. Staff shifted focus to the ongoing pandemic response.



The Green Kirkland Partnership continues Kirkland's commitment to restoring natural areas in parks



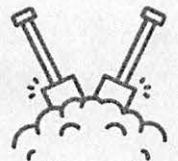
29 Volunteer Stewards
405 Individual Volunteers
3,675 Volunteer Hours

259.5 Acres in Restoration



2,575 Native Plants Planted
396 Native Trees Planted
1,408 Invasive Trees Removed

409 Cubic Yards of Mulch Applied



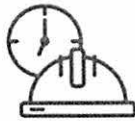
\$93,000 in Grant Funding received to support restoration efforts

697



ACRES MAINTAINED

Parks Management maintains 697 acres of parks, fields, trails, and beaches throughout the city



54,454

TOTAL LABOR HOURS WORKED BY PARKS MAINTENANCE STAFF

This is a 17% reduction from 2019 due to reduced seasonal staffing caused by the COVID-19 pandemic.

\$9,961

PER ACRE



Parks Management is budgeted at \$9,961 per acre. This is an increase of 52% since the the Park Levy was implemented in 2012.



775

CUBIC YARDS OF PLAYGROUND CHIPS

Parks Management uses ADA compliant engineered wood chips to maintain safe playgrounds for the community. This amount of chips would nearly fill the Peter Kirk Pool.

4,646,797

GALLONS OF WATER



Over 4.6 million gallons of water from Lake Washington was used to irrigate our waterfront parks. This saved the city over \$42,000.

INVESTING IN PARKS

ACTIVE AMENITY ENHANCEMENTS: Kids can blast off on their next adventure at the new space-themed playground at North Kirkland Community Center Park. The much-loved train-themed playground was replaced after 28 years of fun. The space theme was selected by the community to inspire kids to shoot for the stars. The playground features a spaceship rocket climber, planet climbers, out-of-this-world independent spinners, a docking station climber, and a galaxy net climber. Additionally, the playground equipment from Juanita Beach park was relocated to Windsor Vista Park to enhance this neighborhood park.



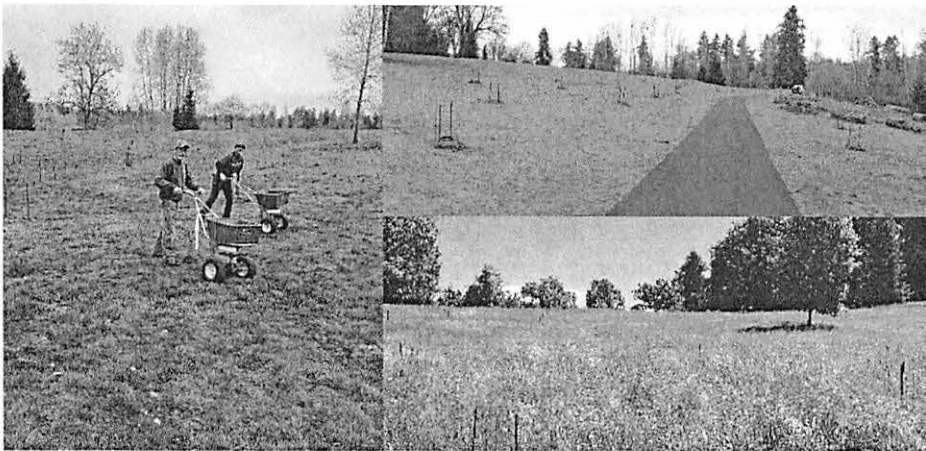
ACCESSIBILITY IMPROVEMENTS: New asphalt pathways were installed throughout OO Denny park. This project was completed in partnership with Public Works.

The playground at Juanita Beach was designed to be both ADA accessible and all-inclusive. An inclusive playground is a playground that allows children of all ages and abilities to play together. Artificial turf was used because it is both wheelchair accessible and helps to develop physical, cognitive, sensory and social skills. Inclusive playgrounds provide a platform for social equity and allow entire families of all ages to enjoy time together.

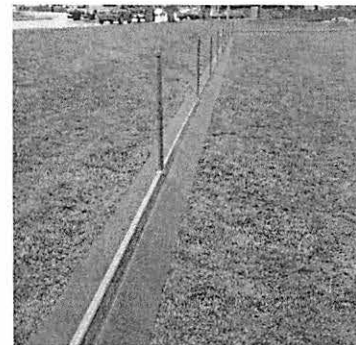


JUANITA BAY PARK NATURAL AREAS:

The lawn area was transitioned to a pollinator-friendly meadow, with native wildflowers such as lupine and yarrow. Additionally, one hundred native Garry oak trees were planted as part of the effort to establish a diverse, healthy urban forest. This project was funded by the City Forestry account and was completed by our Washington Conservation Corps field crew.



WEED MANAGEMENT: In collaboration with the City's IT Team, staff implemented the ArcCollector GIS application to allow in-the-field, real-time tracking of all known locations of listed, noxious weeds within the City. This will allow staff to track treatments used and their effectiveness. Staff have continued to reduce the use of synthetic herbicides, primarily using organic products whenever possible. Other strategies include the installation of mow strips along fence lines and mulch rings around trees. Both significantly reduce the need for herbicide and saves staff time by reducing manual trimming.



SPECIAL EVENTS



IN A TYPICAL YEAR, staff support 50+ events on over 100+ days per year. In response to the COVID-19 pandemic, most special events were cancelled in 2020. Staff shifted focus to support the city's ongoing pandemic response, emergency operations and relief efforts. As an essential service, the Juanita Friday Market was able to operate in 2020 with numerous COVID restrictions in place to safely serve the community.



19

REGISTERED VENDORS

750
AVERAGE WEEKLY CUSTOMERS



34

VOLUNTEER HOURS

\$122,250

TOTAL SALES BY ALL VENDORS



DRIVE-THROUGH OPTION ADDED FOR COVID-19 SOCIAL DISTANCING

Thank you for offering a safer and more distanced market experience with the guidelines you've put in place. The market staff and volunteers are always helpful, and the vendors seem to take in stride and with good humor...Thanks for offering a safe farmers market shopping experience.

~Emily M., Juanita Resident

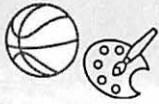
RECREATION



IN A TYPICAL YEAR, the Recreation Division provides about 2,000 programs for close to 20,000 participants. Community Centers were closed, and recreation programs were cancelled on March 7, 2020. Staff continued to serve the community through a variety of programs and services. Staff creatively pivoted to engage the community in new ways, through community-based do-it-yourself scavenger hunts, virtual classes and events, as well as social media. Staff also developed comprehensive COVID-19 safety plans to prepare for the return of in-person programs in 2021.



4,000+ RECREATION PARTICIPANTS



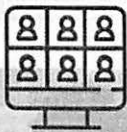
Over 4,000 people participated in the limited assortment of recreation programs

SENIOR NUTRITION PROGRAM MEALS 10,915



The lunch program at PKCC became a "to-go" service in 2020. Hot lunches were available for pick-up three days a week. Meals were also delivered to the homebound through Meals on Wheels.

VIRTUAL AND SELF GUIDED PROGRAMS 350+



The Recreation Division quickly adapted to the pandemic by offering a variety of virtual and self-guided programs including trivia contests and scavenger hunts

3,244 SR SERVICE VISITS, APPTS, AND TRIPS

In partnership with Northshore Community Center, transportation provided helps seniors get to PKCC, medical appointments, grocery stores and other essential trips.



RECREATION PROGRAM HOURS 1953



Mostly through virtual programs, Recreation was able to offer 1953 hours of programming, a reduction of 88% from 2019

FRESH FRUITS AND VEGIES DISTRIBUTED 15,000+



The City partnered with EastWest Food Rescue to provide over 15,000 pounds of fresh produce at no cost to anyone who wanted to participate.

FACEBOOK FOLLOWERS 97%↑

Increased following on Facebook by 97%, gaining 881 new followers



GIVING PROGRAM \$25,000



In 2020, 7 benches, 1 picnic table, and 1 tree were donated to our parks through the giving program

HUMAN SERVICES

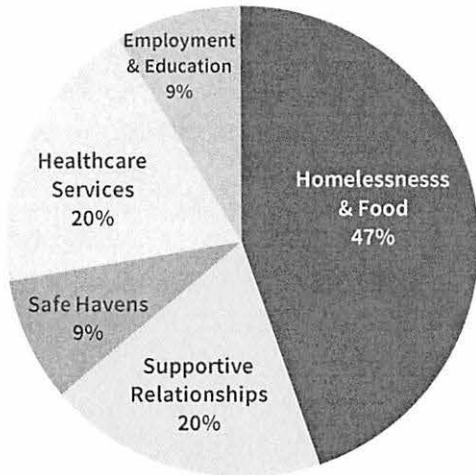
COVID-19 SUPPORT

Human Services staff saw a significant increase in demand on their time in response to the COVID-19 pandemic. Supporting the needs of the community was made possible thanks in part to CARES Act funding and city leadership prioritizing human services needs. Over \$1.24 million was distributed to support the community through non-profit service providers in the areas of food, housing and shelter, youth, cultural resources, and other grants. Additionally, staff coordinated a postcard mailer sent to all Kirkland residences with information on donating, getting food or volunteering.

-  **FOOD**
 - Expanded food assistance and support
 - Hotline for housebound residents
-  **HOUSING & SHELTER**
 - Rent, mortgage, and utility assistance
 - Support safe conditions in shelters/day centers
-  **YOUTH**
 - Day camp for children
-  **CULTURAL RESOURCES**
 - Outreach and resource sharing to the Spanish speaking community
-  **GRANTS**
 - Human Services agency reimbursement grants

HUMAN SERVICES FOCUSES FUNDING INVESTMENTS IN 5 GOAL AREAS

• \$1,493,682 total funding • 87 programs • 49 local agencies



THE KIRKLAND YOUTH COUNCIL continues to advise, serve, and amplify the diverse voice of the youth community with the Lake Washington School District, community organizations, and city staff. This year, Youth Council met quarterly with LWSD’s superintendent Jon Holmen to discuss Covid-19 response and recovery in the schools, including distant learning and “Future Ready”. Members also provided critical feedback to the City and County on R-5434, renewal of the Best Starts for Kids Levy, and the Fire Safety Ballot, in addition to neighborhood master plan review and school resource officers.

10 
TEEN TRAFFIC COURT CASES
Presided over 10 Teen Traffic Court cases

\$8,500 
MINI-GRANTS AWARDED
Youth Council awarded \$8,500 in mini-grants

Some of those funded through the mini-grant program include India Association of Western Washington, Juanita High’s Homelessness Awareness effort, Kamiakin’s low-income bus pass program, Rose Hill’s food pantry, and Tesla STEM’s Japanese Incarceration Remembrance effort. The future of Kirkland is bright because of the work, advocacy, and vision of its Youth Council.

KIRKLAND CITY COUNCIL



Pictured from left to right: Toby Nixon, Jon Pascal, Kelli Curtis, Mayor Penny Sweet, Amy Falcone, Deputy Mayor Jay Arnold, Neil Black

KIRKLAND PARK BOARD

Chair Susan Baird-Joshi | **Vice Chair** Amanda Judd

Uzma Butte | Richard Chung | Tammy Cohen | Mike Holland | Roshan Parikh | Daniel Triplett

The Kirkland Park Board meets the 2nd Wednesday of each month at 7 pm



CITY STAFF

CITY MANAGER'S OFFICE

City Manager Kurt Triplett

Deputy City Manager Tracey Dunlap | **Assistant City Manager** Jim Lopez

PARKS AND COMMUNITY SERVICES

Director Lynn Zwaagstra

Deputy Director John Lloyd