

AN ORDINANCE OF THE CITY OF KIRKLAND AMENDING ORDINANCE 2346 AS AMENDED AND ADOPTING A COMPREHENSIVE PLAN AMENDMENT TO DESIGNATE LAND USE AND ESTABLISH POLICIES FOR A PORTION OF UNINCORPORATED KING COUNTY, INCLUDING A PORTION OF THE AREA PROPOSED FOR ANNEXATION BY ROBERT COOK AND THE ADJACENT AREA LYING SOUTH OF N.E. 116TH STREET (FILE NO. PA-81-119).

WHEREAS, City Council Resolution No. R-2830 directed the Kirkland Planning Commission with the assistance of the Department of Community Development to prepare "a Land Use Plan and Zoning Regulation to be consistent with and as an extension of the Kirkland Land Use Policies Plan... and the Kirkland Zoning Ordinance" for "the area of unincorporated King County bounded on the south by N.E. 106th Street, on the east by 100th Ave. N.E., on the north by N.E. 116th Street, and on the west by Lake Washington"; and

WHEREAS, pursuant to Resolution No. R-2830, an amendment to the Land Use Policies Plan was recommended by the Planning Commission after consideration at a public hearing on July 9, 1981 and was subsequently approved by the City Council by the adoption of Ordinance No. 2608 on July 20, 1981; and

WHEREAS, pursuant to Resolution No. R-2830, a proposed Zoning Regulation in conformance with the land use policies adopted by Ordinance No. 2608 was considered by the Planning Commission at a public hearing on August 6, 1981, at which time the Department of Community Development was directed to prepare another amendment to the Land Use Policies Plan for a portion of the area subject to Ordinance No. 2608; and

WHEREAS, an amendment to the Land Use Policies Plan for the area shown in Exhibit "A" attached hereto was prepared by the Department of Community Development and considered by the Planning Commission at a public hearing on October 1, 1981; and

WHEREAS, the Kirkland Planning Commission has transmitted to the Kirkland City Council recommended amendments to the Land Use Policies Plan as shown in Exhibits "A" and "B" attached hereto; and

WHEREAS, an Environmental Checklist was prepared and a Final Declaration of Non-Significance was issued by the Responsible Official pursuant to the requirements of the State Environmental Policies Act (RCW-43.21C and WAC Chapter 197-10) and Kirkland Ordinance No. 2473 as amended; and

WHEREAS, said Environmental Information and Final Declaration accompanied said proposed and recommended amendments to the Land Use Policies Plan and were available for consideration by the Kirkland Planning Commission and the Kirkland City Council during the entire review and consideration process.

NOW, THEREFORE, BE IT ORDAINED by the City Council of the City of Kirkland as follows:


Section 1. Figure 39 on Page 255 of Ordinance 2346 as amended, the Land Use Policies Plan, is amended to include the land use designations shown in Exhibit "A" attached hereto, and incorporated herein.

Section 2. Page 407C of Ordinance 2346 as amended, the Land Use Policies Plan, is amended as shown in Exhibit "B" attached hereto and incorporated herein.

Section 3. This ordinance shall become effective upon the effective date of this ordinance which shall be five days after the date of passage of the ordinance and posting as required by law and upon compliance with all conditions imposed.


PASSED by majority vote of the Kirkland City Council in regular, open meeting this 19th day of October, 1981.

SIGNED in authentication thereof this 19th day of October, 1981.



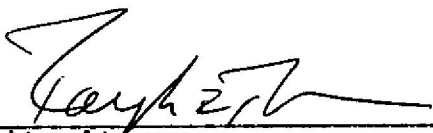
Mayor

ATTEST:



Director of Administration and Finance
(ex officio City Clerk)

APPROVED AS TO FORM:

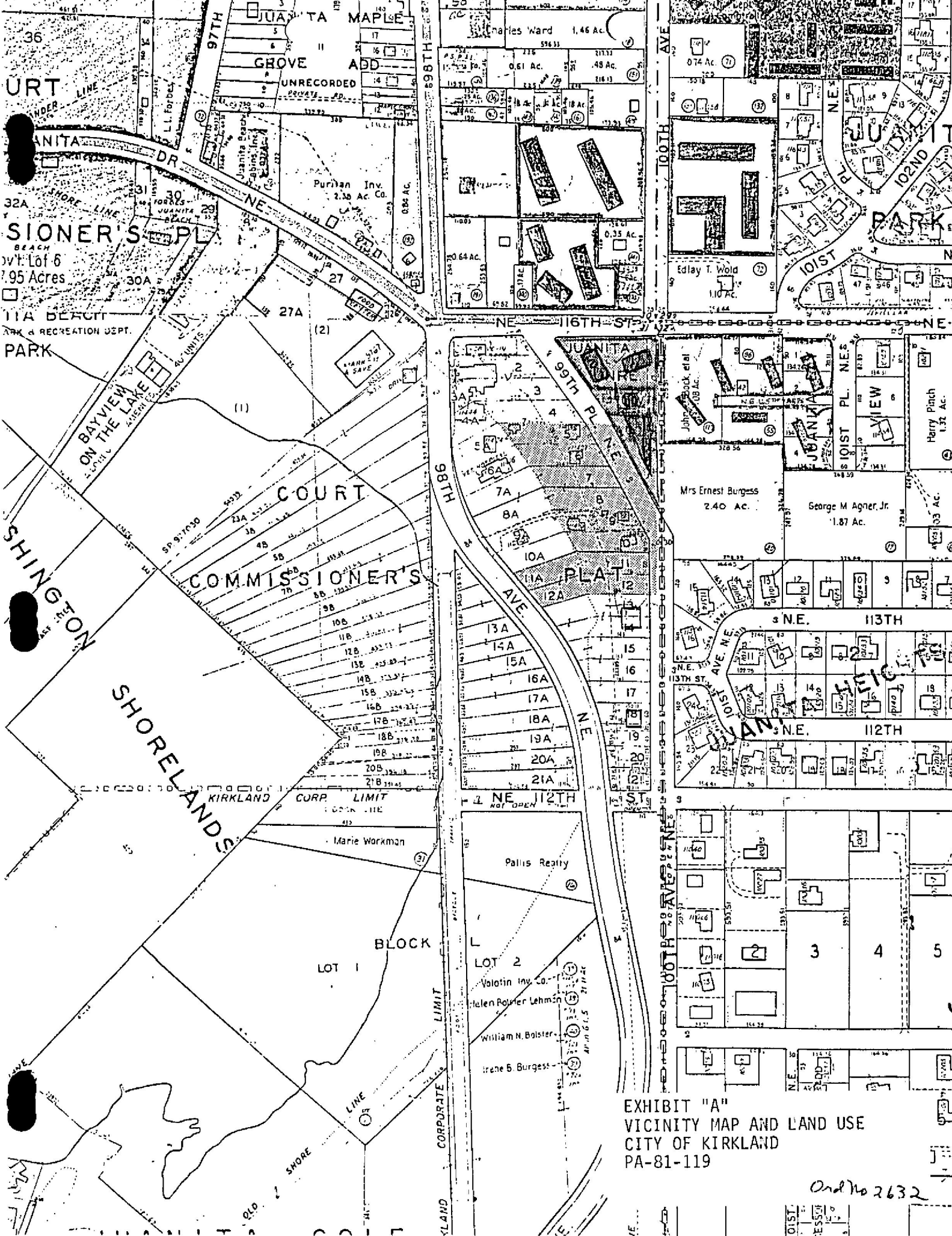


City Attorney

I hereby certify under penalty of perjury that the foregoing ordinance was posted on the 21st day of October, 1981 in accordance with the provisions of RCW 35A.12.160 and City of Kirkland Ordinance No. 2600.



ANNABEL JENSEN
Deputy City Clerk

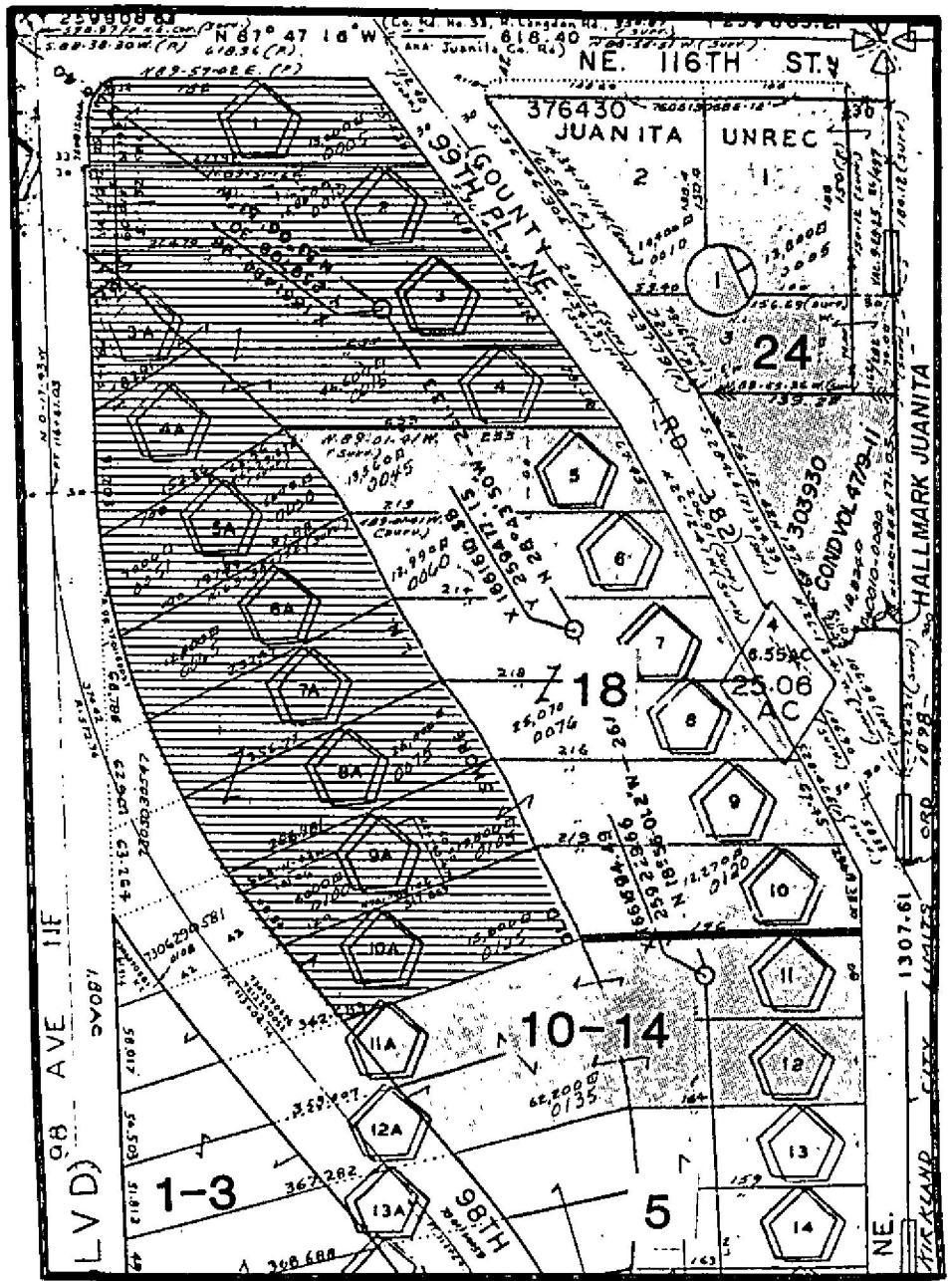


SHORNER'S BEACH
 7.95 Acres
 PARK & RECREATION DEPT.
 PARK

SHINGTON SHORELANDS
 KIRKLAND

EXHIBIT "A"
 VICINITY MAP AND LAND USE
 CITY OF KIRKLAND
 PA-81-119

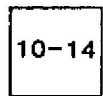
Ord No 2632



Commercial



Medium and High Density Residential



10-14 Maximum Density (in dwelling units/acre)

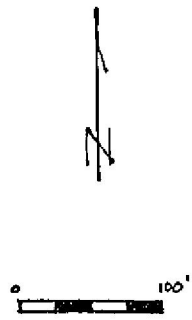


EXHIBIT "B"
 PROPOSED MAP AMENDMENT
 CITY OF KIRKLAND
 PA-81-119