

ORDINANCE O-4629

AN ORDINANCE OF THE CITY OF KIRKLAND RELATING TO COMPREHENSIVE PLANNING, ZONING AND LAND USE AND AMENDING THE COMPREHENSIVE PLAN ORDINANCE 3481, AS AMENDED, AND APPROVING A SUMMARY FOR PUBLICATION, FILE NO. CAM16-02742.

1 WHEREAS, the City Council has received a recommendation
2 from the Kirkland Planning Commission and the Houghton Community
3 Council to amend certain portions of the Comprehensive Plan for the
4 City, Ordinance 3481, as amended, as set forth in the reports and
5 recommendations of the Planning Commission dated May 25, 2017 and
6 the Houghton Community Council dated May 22, 2017, and bearing
7 Kirkland Planning and Building Department File No. CAM16-02742; and
8

9 WHEREAS, prior to making the recommendation the Planning
10 Commission and the Houghton Community Council, following notice as
11 required by RCW 35A.63.070, held on March 23, 2017, a joint public
12 hearing on the amendment proposal and considered the comments
13 received at the hearing; and
14

15 WHEREAS, pursuant to the State Environmental Policy Act
16 (SEPA), there has accompanied the legislative proposal and
17 recommendation, a SEPA addendum to Existing Environmental
18 Documents, issued by the responsible official pursuant to WAC
19 197-11-625; and
20

21 WHEREAS, in a public meeting on December 12, 2017, the City
22 Council considered the environmental documents received from the
23 responsible official, together with the report and recommendation of the
24 Planning Commission and Houghton Community Council; and
25

26 WHEREAS, RCW 36.70A.130, requires the City to review all
27 amendments to the Comprehensive Plan concurrently and no more
28 frequently than once every year.
29

30 NOW, THEREFORE, the City Council of the City of Kirkland do
31 ordain as follows:
32

33 Section 1. Comprehensive Plan amended. The Central
34 Houghton Neighborhood Plan; Everest Neighborhood Plan; the City-
35 wide Land Use Map in the Land Use Element; and Table LU-2:
36 Residential Densities and Comparable Zones in the Land Use Element
37 are amended. The Comprehensive Plan, Ordinance 3481, as amended,
38 is amended in accordance with Exhibit A attached to this Ordinance and
39 incorporated by reference.
40

41 Section 2. If any section, subsection, sentence, clause,
42 phrase, part or portion of this Ordinance, including those parts adopted
43 by reference, is for any reason held to be invalid or unconstitutional by
44 any court of competent jurisdiction, such decision shall not affect the
45 validity of the remaining portions of this Ordinance.

46 Section 3. To the extent that the subject matter of this
47 Ordinance is subject to the disapproval jurisdiction of the Houghton
48 Community Council as created by Ordinance 2001, the Ordinance shall
49 become effective with the Houghton community either upon approval
50 of the Houghton Community Council, or upon failure of the Community
51 Council to disapprove this Ordinance within 60 days of its passage.

52
53 Section 4. Except as provided in Section 3, this Ordinance
54 shall be in full force and effect five days from and after its passage by
55 the City Council and publication, pursuant to Section 1.08.017, Kirkland
56 Municipal Code in the summary form attached to the original of this
57 Ordinance and by this reference approved by the City Council.

58
59 Section 5 A complete copy of this Ordinance shall be
60 certified by the City Clerk, who shall then forward the certified copy to
61 the King County Department of Assessments.

62
63 Passed by majority vote of the Kirkland City Council in open
64 meeting this 12th day of December, 2017.

65
66 Signed in authentication thereof this 12th day of December,
67 2017.



Amy Walen, Mayor


Attest:



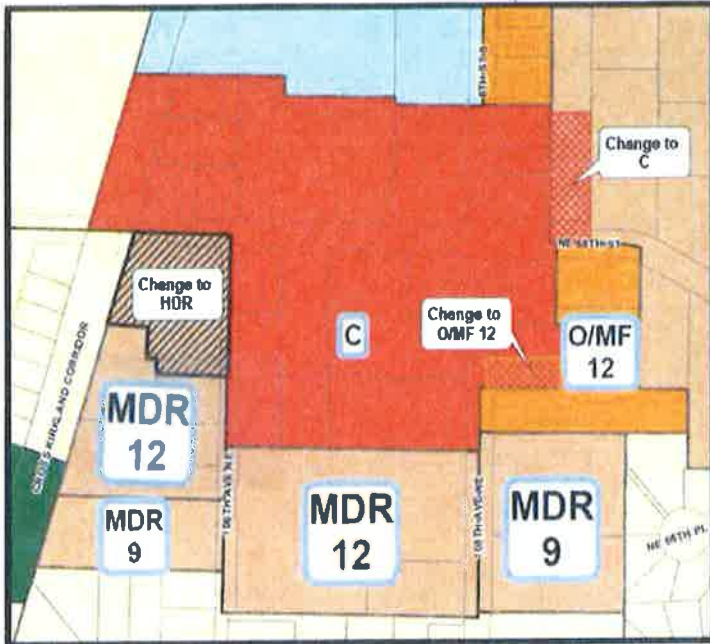
Kathi Anderson, City Clerk

Publication Date: December 18, 2017

Approved as to Form:



Kevin Raymond, City Attorney



Changes to Figure LU-1
Comprehensive Land Use Map

**Table LU-2
Residential Densities and Comparable Zones**

General Residential Densities	Residential Densities as Specified in Comprehensive Plan in Dwelling Units per Net Acre (d/a)	Comparable Zoning Classification
GREENBELT/URBAN SEPARATOR	Up to 1 d/a	RSA – 1
LOW DENSITY	Up to 1 d/a	RS – 35,000, RSX – 35,000
	Up to 3 d/a	RS – 12,500, RSX – 12,500
	4 – 5 d/a	RS – 8,500, RSX – 8,500, RS – 7,200, RSX – 7,200, RSA – 4
	6 d/a	RS – 7,200, RSX – 7,200, RSA – 6
	7 d/a	RS – 6,300
	8 – 9 d/a	RS – 5,000, RSX – 5,000, RSA – 8
MEDIUM DENSITY	8 – 9 d/a	RM – 5,000, RMA – 5,000
	10 – 14 d/a	RM – 3,600, RMA – 3,600
HIGH DENSITY	15 – 18 d/a	RM – 2,400, RMA – 2,400, BNA
	19 – 24 d/a	RM – 1,800, RMA – 1,800, BNA
	48 d/a	BN, MSC 2
	<u>More than 48 d/a</u>	<u>HENC 2</u>

1. OVERVIEW

The Central Houghton Neighborhood is bounded by the Cross Kirkland Corridor and the Lakeview Neighborhood on the west; Interstate 405 right-of-way on the east; and NE 68th Street on the north. The southern boundary is the Kirkland City limit (see Figure CH-1, Central Houghton Land Use Map). 108th Avenue NE provides the main north-south vehicular, bicycle and pedestrian connection through the neighborhood, while NE 68th Street provides an east-west connection.

Central Houghton is predominately a single-family neighborhood. Other land uses within the neighborhood consist of medium **and high** density residential, offices, neighborhood-oriented businesses and a variety of schools, including Northwest University.

The ~~business district~~ **Neighborhood Center**, located along NE 68th Street, is the neighborhood's only commercial area. The undeveloped 73-acre Watershed Park takes up a large area in the southeastern corner of the neighborhood. Carillon Woods Neighborhood Park is in the central part of the neighborhood and Phyllis A. Needy Neighborhood Park provides a smaller neighborhood park adjacent to 108th Avenue NE.

2. VISION STATEMENT

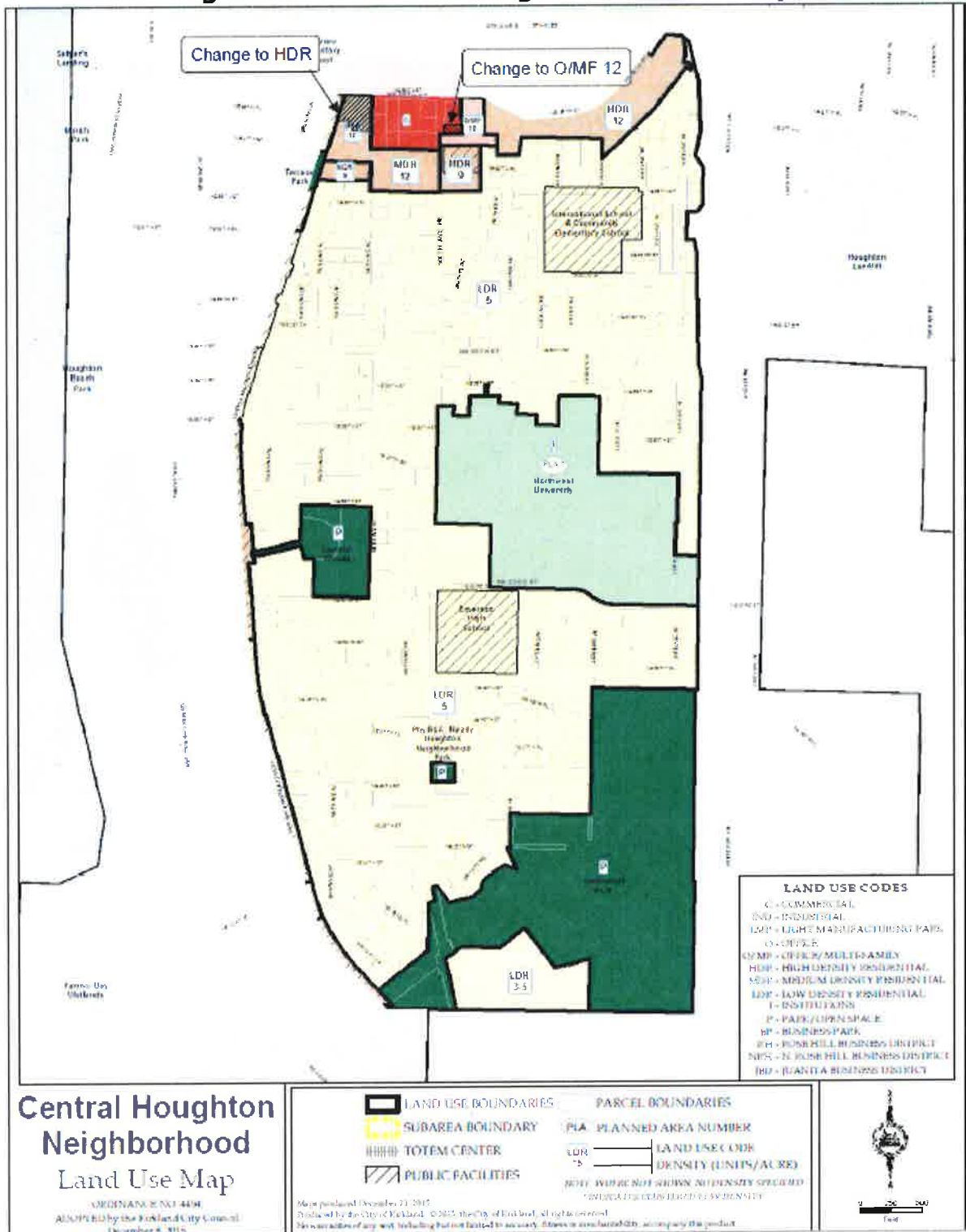
The vision statement is a verbal description of the character and qualities of the Central Houghton Neighborhood at a future time when the goals and policy direction expressed in this neighborhood plan are realized.

The Central Houghton Neighborhood has a rich and unique history. The area's political history as part of a separate city until 1968 fostered a deep community identity, establishing a tradition in which residents seek opportunities for involvement and stewardship in the neighborhood's future.

The neighborhood's predominantly low density residential character has been maintained, while the changing and varied needs of the population are accommodated through a diverse housing stock. Greater housing choices, as well as efforts to preserve affordability in housing, help to expand housing opportunities for all residents within the neighborhood.

Central Houghton is a friendly, accessible neighborhood, with safe and inviting pedestrian and bicycle routes. Healthy and active living is promoted through attractive streets and trails. Traffic on the neighborhood's major streets, 108th Avenue NE and NE 68th Street, is managed well, with improvements designed to be compatible with surrounding development. The Cross Kirkland Corridor provides pedestrian and bicycle connections linking the corridor to parks and other neighborhood gathering places.

Figure CH-1: Central Houghton Land Use Map



Local citizens value the variety of opportunities to meet in shops and restaurants within the Houghton/Everest ~~Business District~~ **Neighborhood Center**, as well as in casual locations in the neighborhood's parks and natural areas. The Houghton/Everest ~~Business District~~ **Neighborhood Center** has evolved into a thriving, pedestrian-oriented mixed use center, with businesses available to meet the retail and service needs of the community. Appropriate streetscapes, site layouts and building designs provide an attractive and coordinated appearance within the ~~district~~ **Center**. Careful attention to the placement and design of vehicle and pedestrian access from commercial areas to surrounding streets contributes to an efficient street network, and avoids conflicts with nearby low density areas.

Several schools and the Northwest University campus add to the Central Houghton community by providing neighborhood residents with a connection to the schools' students, parents, and facilities, as well as with residents of other Kirkland neighborhoods and the larger community. These campuses are valued and supported, not only for their role in providing educational opportunities and fostering community relationships, but for the additional open space they provide and share with the neighborhood.

The Central Houghton Neighborhood provides many beautiful open space experiences including the views, tree canopy and neighborhood parks. The residents cherish and preserve the territorial views, including the expansive views of Lake Washington, Seattle and the Olympic Mountains, the slopes, and the natural watershed areas that contribute to the neighborhood's distinctive character. The tree canopy in the neighborhood has been managed and enhanced, and adds to the neighborhood's peaceful setting. The neighborhood's parks meet the needs of the neighborhood's residents. Phyllis A. Needy Park provides a place for active play for the neighborhood's youngest residents, while Carillon Woods meets the neighborhood's recreational needs with a play area and both paved and natural trails. Opportunities for residents to quietly observe and enjoy wildlife habitat and open space exist at Carillon Woods and at the south end of the neighborhood, in the Watershed Natural Area.

Central Houghton residents take great pleasure and pride in calling this beautiful neighborhood their home.

5. LAND USE

Residential land uses occupy the majority of the Central Houghton neighborhood. Schools, including the expansive campus of Northwest University, are dispersed throughout the low-density residential core, while two large park and open space areas, Carillon Woods and the Watershed Natural Area, are located in the central and southern portions of the neighborhood. Multifamily apartments and condominiums are clustered along the northern edge of Central Houghton, where they adjoin the neighborhood's only commercial area, the Houghton/Everest Neighborhood Center.

RESIDENTIAL

Goal CH-3: Promote and retain the residential character of the neighborhood while accommodating compatible infill development and redevelopment.

Policy CH-3.1: Retain the predominately detached single-family housing style in the Central Houghton neighborhood.

Central Houghton is a well established neighborhood that has predominately low density (five to six dwelling units per acre) traditional single-family residential development. The land use transitions from low density residential to medium **and high** density multifamily and commercial development in the northern portion of the neighborhood near NE 68th Street. A mix of housing styles and sizes is important to the neighborhood's character.

Goal CH-4: Allow alternative residential development options that are compatible with surrounding development.

Policy CH-4.1: Allow a variety of development styles that provide housing choice in low density areas.

Providing housing options for a wide spectrum of households is an important value to support and encourage. Alternative housing provides more housing choice to meet changing housing demographics such as smaller households and an aging population. Allowing design innovations can help lower land and development costs and improve affordability. Compatibility with the predominant traditional detached single-family housing style in the neighborhood will determine the acceptance of housing alternatives. Alternative housing types such as cottage, compact single-family, accessory dwelling units, and clustered dwellings are appropriate options to serve a diverse population and changing household size and composition.

Policy CH-4.2: Encourage diversity in size of dwelling units by preserving and/or promoting smaller homes on smaller lots.

Diversity can be achieved by allowing properties to subdivide into lots that are smaller than the normal minimum lot size allowed in the zone if the size of houses on the small lots is limited. This encourages diversity, maintains neighborhood character, and provides more housing choice. Up to 50 percent of the single-family lots in a subdivision should be allowed to be smaller than the zoning designation allows if a small house is retained or built on the small lots. The lots containing the small houses should be no less than 5,000 square feet in the RS 7.2 zones and no less than 6,000 square feet in the RS 8.5 zones. The size of the houses on the small lots would be limited by a maximum floor area ratio and all other zoning regulations would apply.

Policy CH-4.3: The residential land south of NE 68th Street and surrounding the Houghton/Everest Neighborhood Center area is suitable for medium to high residential densities (see MDR, HDR and O/MF land use designations on Figure CH-1).

The area south of NE 68th Street and surrounding the Houghton/Everest Center is appropriate for medium **to high** densities because of topographic features and surrounding neighborhood conditions. This area provides a good transition between the low density residential uses to the south, and the commercial shopping area to the north.

COMMERCIAL

Houghton/Everest Neighborhood Center

The Houghton/Everest Neighborhood Center is defined as a “Neighborhood Center” commercial area in the Land Use Element of the Comprehensive Plan. It includes properties on the north and south sides of NE 68th Street in both the Central Houghton and Everest Neighborhoods.



Goal CH-5: Promote a strong and vibrant Neighborhood Center with a mix of commercial and residential uses that primarily serve the adjacent neighborhoods.

Policy CH-5.1: Coordinate with the Everest Neighborhood to develop a plan for the Houghton/Everest Neighborhood Center, which overlays properties along the NE 68th Street corridor in both the Everest and Central Houghton neighborhoods (see inset).

This plan should promote a coordinated strategy for the Neighborhood Center while minimizing adverse impacts on surrounding residential areas. ~~The existing land use map designations will be used until the land use, zoning and development regulations for the entire Neighborhood Center are re-examined.~~

Policy CH-5.2: Encourage a mix of uses within the Houghton/Everest Neighborhood Center that includes commercial development such as neighborhood-oriented shops, services, and offices, as well as multifamily residential use.

A variety of uses, including retail, office and residential, should be combined in order to contribute to a vibrant mixed use Neighborhood Center.

Policy CH-5.3: Implement transportation improvements including those in the 6th Street Corridor Transportation Study that support the existing and planned land uses in the Neighborhood Center and adjoining neighborhoods.

A review of transportation impacts should be done for all new development in the Neighborhood Center. This review should also include determination of the best location for a new east/west connection between 106th Avenue NE and 108th Avenue NE. with Transportation system improvements should be designed to encourage traffic to use existing arterials and to include traffic calming devices on neighborhood streets. Alternate modes of transportation should also be encouraged.

Policy CH-5.4: ~~Expand the area designated for higher intensity use to~~ Allow higher residential density on properties on the west side of 106th Avenue NE of Houghton Center and south of NE 68th Street.

Land located west of the Houghton Center shopping area, directly east of the Cross Kirkland Corridor, has the potential to provide higher density residential use within walking distance of retail and business services. The Cross Kirkland Corridor provides a wide buffer between this area and the low density residential area to the west. A connection to the Cross Kirkland Corridor should be provided from 106th Street through this area.

Goal CH-6: Promote high quality design by establishing building, site, and pedestrian design standards that apply to commercial and multifamily development in the Houghton/Everest Neighborhood Center.

Policy CH-6.1: Establish design guidelines and regulations that apply to all new, expanded or remodeled commercial, multifamily or mixed use buildings in the Houghton/Everest Neighborhood Center.

These design guidelines and regulations should support appropriate building scale and massing, produce buildings that exhibit high quality design with a sense of permanence, and incorporate site design which includes pedestrian features and amenities that contribute to the livability of the surrounding area. They should also strengthen the visual identity of the neighborhood center by addressing streetscape improvements and public views to the lake along NE 68th Street.

Houghton Center: The shopping center development located at the southwest corner of NE 68th Street and 108th Avenue NE (shown in yellow on the map) is known as the “Houghton Center.” This large strip retail development sits on several parcels occupying approximately five acres. Redevelopment to a more cohesive, pedestrian-oriented concept may be feasible since a single owner controls the bulk of the site. In addition to its potential to serve the community through expanded neighborhood commercial uses, Houghton Center can contribute to the livability and vitality of the neighborhood by providing residents and visitors with a welcoming place to shop, congregate and relax.

Goal CH-7: Support the transition of the Houghton Center into a pedestrian-oriented mixed use development with access to transit, that includes including retail, with office or residential and other compatible uses that primarily serve the adjacent neighborhoods.

Policy CH-7.1: Promote a pedestrian-oriented development concept through standards for a coordinated master plan for Houghton Center including retail, with office and/or residential and other compatible uses.

A master plan for the Houghton Center should provide for a complementary arrangement of facilities, pedestrian amenities, open spaces, and linkages, as well as shared parking that meets the needs of Houghton Center and a coordinated sign system.

Policy CH-7.2: Reduce ingress and egress conflicts within and around Houghton Center through creation of a circulation system for vehicles and pedestrians as part of a master plan for development of the property.

The circulation system for both pedestrians and vehicles should provide the minimum amount of ingress and egress locations necessary for an effective circulation system into and through Houghton Center.

Policy CH-7.3: Allow building heights ~~to step up to five~~ three stories if certain retail uses that primarily serve the neighborhood are provided. Careful attention is should be given through the Design Review process to pedestrian orientation, building modulation, upper story setbacks, and use of materials to reduce the appearance of bulk and mass.

Specific design guidelines should be developed to ensure that modulation is used to break down scale and massing of buildings into smaller and varied volumes, and to provide upper story setbacks from the sidewalks to improve the pedestrian experience and maintain human scale.

6. TRANSPORTATION

The circulation patterns in the Central Houghton Neighborhood are well established. 108th Avenue NE, a designated minor arterial, provides the primary north-south route through the Central Houghton Neighborhood. It also provides local access for a substantial number of residences, schools and businesses (see Figures CH-5 and CH-6).

NE 68th Street which forms the northern boundary of the neighborhood is also a minor arterial. NE 52nd Street is designated a collector street providing an east-west connection between 108th Avenue NE and Lake Washington Boulevard. NE 53rd Street between 108th Avenue NE and 114th Avenue NE is also a collector street. All other streets within the neighborhood are classified as neighborhood access streets. They provide access to adjacent residences and connect to the collectors and minor arterials.

Nonmotorized transportation is addressed in the City's Active Transportation Plan and implemented through the Capital Improvement Program or through private development. The design of these improvements should enhance neighborhood access while fitting into the unique areas they traverse.

Goal CH-11: Maintain mobility along 108th Avenue NE as a major vehicle, transit, pedestrian and bicycle corridor through the neighborhood.

Policy CH-11.1: Retain The existing three-lane configuration for 108th Avenue NE, should be monitored to determine appropriate measures to mitigate transportation impacts.

Traffic on 108th Avenue NE is often heavy, particularly during morning and evening commute periods. Congestion restricts local access to and from 108th Avenue NE and creates conflicts for bicyclists, transit riders, adjacent residents, and pedestrians, including children arriving at and leaving the schools. Future traffic levels should be monitored and appropriate measures should be considered to mitigate impacts.

Policy CH-11.2: Enhance attractiveness and accessibility of 108th Avenue NE for all modes of transportation.

A master plan for 108th Avenue NE should be established through a public process. The plan should consider installation of streetscape amenities such as pedestrian lighting, street furniture, and low level landscaping to enhance the pedestrian experience and the continuation, widening and signing of bicycle lanes.

Policy CH-11.3: Implementation of street improvements should occur through both the City's Capital Improvement Program process and through site-specific private development.

The means to implement improvements should be determined on a comprehensive area-wide basis and, to the extent possible, on an incremental basis by encouraging or requiring the incorporation of improvements into private developments.

Policy CH-11.4: Support transportation measures that will reduce commuter or pass through traffic through the neighborhood.

The City should support and encourage the following measures:

1. Alternatives to single-occupancy vehicles for commuting purposes, such as public transportation, **bicycling, walking, commuter pools, high capacity transit and** high-occupancy vehicles (HOV), ~~and potentially other transportation modes such as light rail.~~
2. Improvements to the I-405/SR 520 corridors.

Goal CH-12: Encourage mobility and the use of nonmotorized transportation by providing improvements for pedestrians and bicyclists.

Policy CH-12.1: Improve the pedestrian and bicycle circulation systems both as a recreation amenity and alternative transportation option.

Pedestrian and bicycle pathways are part of the transportation system but also provide recreational opportunities. Pathways and trails should be provided to activity nodes such as the Houghton/Everest Neighborhood Center, parks and transit facilities, and the Lakeview Neighborhood. Directional signs indicating path locations should also be provided.

Policy CH-12.2: Support future development of the Cross Kirkland Corridor as a multipurpose trail for pedestrians and bicycles with access points along the corridor consistent with the CKC Master Plan and the Park Recreation and Open Space Plan.

The unused BNSF railroad right-of-way, known as the Cross Kirkland Corridor, provides an opportunity for a bicycle, pedestrian and ~~rail transportation corridor~~ **high capacity transit corridor**. Pedestrian and bicycle transportation is a high priority, but regardless of the function of the corridor it should be designed so that it will:

- Serve as a gateway to the City.
- Provide neighborhood pedestrian and bicycle connections, with the highest priority access points at NE 52nd, NE 60th and NE 68th Streets.
- Be compatible with adjacent neighborhoods.
- Ensure a high degree of safety.
- Show environmental stewardship.

3. LAND USE

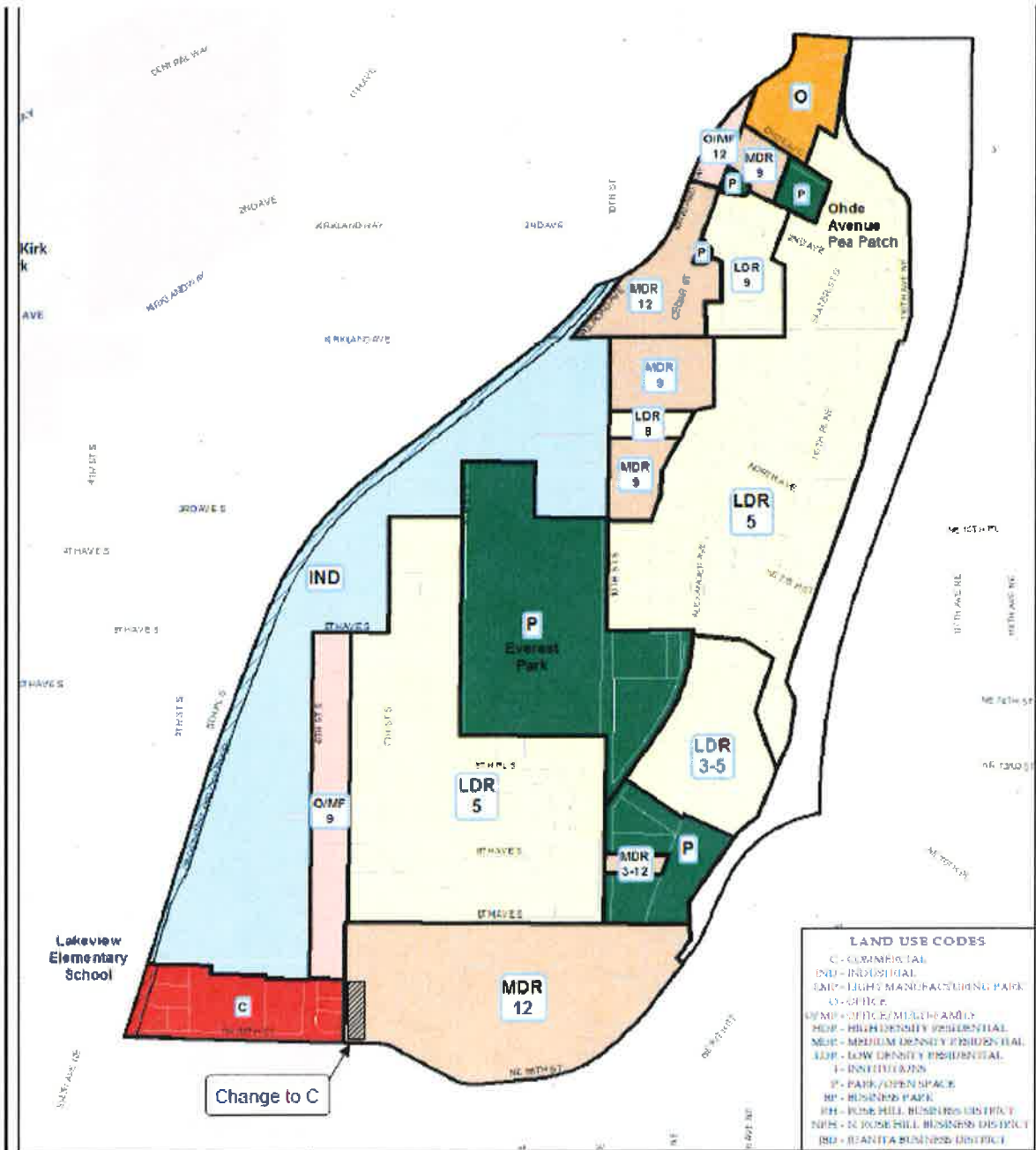
Figure EV-3 shows the land use designations in the Everest Neighborhood.

RESIDENTIAL

Single-family densities are to be maintained west and south of Everest Park.

Most of the Everest Neighborhood is residential in character, including older single-family homes, which add variety to Kirkland's housing supply and provide alternatives to multifamily units and newer single-family homes (see Land Use Chapter). The residential land immediately west and south of Everest Park should be maintained at low residential densities (up to five dwelling units per acre). New single-family development could help stabilize and prolong single-family use in this area.

Figure EV-1: Everest Geologically Hazardous Areas
Figure EV-2: Everest Wetlands, Streams, and Lakes
Figure EV-3: Everest Land Use

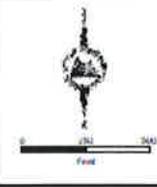


Everest Neighborhood Land Use Map

ORDINANCE NO. 444
 ADOPTED by the Kirkland City Council
 December 8, 2015

LAND USE BOUNDARIES	PARCEL BOUNDARIES
SUBAREA BOUNDARY	PLANNED AREA NUMBER
TOTEM CENTER	LAND USE CODE
PUBLIC FACILITIES	DENSITY (UNITS/ACRE)

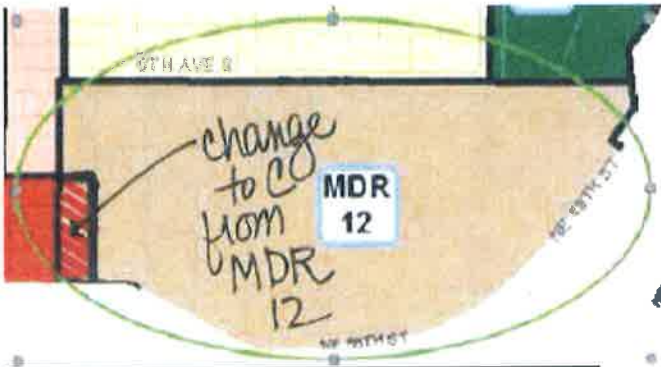
NOTE: WHERE NOT SHOWN, NO DENSITY SPECIFIED
 * INDICATES CLUSTERED DENSITY



Map produced December 1, 2015
 Produced by the City of Kirkland. © 2015 the City of Kirkland, all rights reserved.
 No warranty is made by the City of Kirkland as to the accuracy of the information shown on this product.

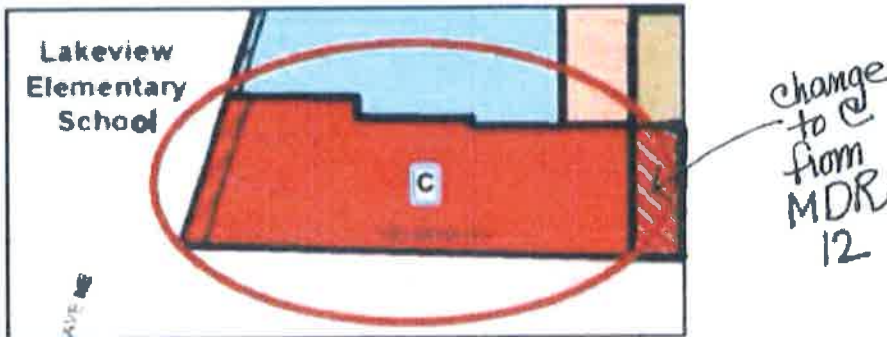
Midblock split of professional office/multifamily uses between 6th Street South and 7th Street South is discussed.

The block fronting on 6th Street South (see Figure EV-3) may develop as either office or multifamily. Multifamily should be medium density (up to nine dwelling units per acre). The easterly extension of such future development should be strictly limited to the midblock line between 6th and 7th Streets South, and access should be restricted to 6th Street South only.



Multifamily development along NE 68th Street and east of 6th Street South (up to 12 dwelling units per acre) is to be continued.

The southern portion of the Everest Neighborhood is impacted by the existence of a freeway interchange and by heavy traffic volumes along NE 68th Street. South of 9th Avenue South most land has been committed for multifamily use, although a few older single-family homes and some undeveloped land still exists. Future multifamily development in this area should be limited to a maximum of 12 dwelling units per acre.



COMMERCIAL

The Houghton/Everest Neighborhood Center to be contained within its present boundaries. A plan for future development of the commercial area should be coordinated with the Central Houghton Neighborhood.

The Houghton/Everest Neighborhood Center is a commercial area that spans the north and south side of NE 68th Street. Commercial uses in this area should satisfy neighborhood needs rather than include intensive uses which would be located more appropriately in the Downtown or other major commercial centers (see the Land Use Chapter). Within the Everest Neighborhood, the height of structures in this area should not exceed 35 feet. The Everest and Central Houghton Neighborhoods should coordinate a plan for the Houghton/Everest Neighborhood Center along both the north and south sides of NE 68th Street and involve the surrounding neighborhoods in the process. The plan should promote a coordinated strategy for future redevelopment of the Neighborhood Center which minimizes adverse impacts on surrounding residential areas. The plan should include a transportation corridor study for 6th Street South.

The existing land available for commercial use is sufficient to meet the needs of the neighborhood. Property along 6th Street South is impacted by heavy traffic volumes and by the existence of industrial and office activities located primarily to the west. These influences detract from the desirability of this area for residential use. Convenient access, however, makes this area suitable for a variety of economic activities.

The Land Use Element designates the Houghton/Everest Neighborhood Center as a commercial and mixed use area. It spans the north and south side of NE 68th Street and includes property on the east side of 6th Street and 108th Avenue NE. The Neighborhood Center should serve the needs for goods and services of the local community. Uses within the neighborhood center may include retail, restaurants, office, service businesses and housing with grocery and drug stores a high priority anchor to serve the everyday needs of the community. Housing provides the opportunity for people to live close to shops, services, employment, transit and the Cross Kirkland Corridor. Redevelopment plans for properties on the west side of 6th Street South/108th Avenue should promote a coordinated strategy for redevelopment of the Neighborhood Center on both sides of NE 68th Street.

The following principles should be incorporated into development plans and standards for the area:

- ◆ **Preserve and enhance neighborhood-serving retail, especially grocery stores.**
- ◆ **Promote a mix of complementary uses.**
- ◆ **Promote high quality design by establishing building, site and pedestrian design standards and guidelines.**
- ◆ **Foster walkable neighborhoods and increased transit service.**
- ◆ **Create gathering places and opportunities for social interaction.**

Properties along 6th Street South, 108th Avenue NE and NE 68th Street are impacted by heavy traffic volumes. Future development and transportation improvements should incorporate the recommendations from the 6th Street Corridor Transportation Study. A new east/west connection from 106th Avenue NE through the Neighborhood Center should also be considered.

Properties to the east of 6th Street South should be encouraged to develop together with joint access off of 6th Street South.

Building heights should be allowed to step up to three stories if certain retail uses that primarily serve the neighborhood are provided. Careful attention should be given through the Design Review process to pedestrian orientation, building modulation, upper story stepbacks, and use of materials to reduce the appearance of bulk and mass.

With regard to building height, an additional two stories (five stories maximum) may be authorized by a Master Plan, which is approved by the City Council after full legislative process with opportunities for public participation. The Master Plan shall include the following:

- **Provision for a southbound right turn lane from 6th Street South to NE 68th Street, as recommended in the 6th St. Corridor Transportation Study;**
- **Consolidation of the property on the northwest corner of NE 68th Street and 6th Street South and property or properties west of the corner property;**
- **Compliance with the principles outlined above for development in this commercial area; and**
- **A circulation plan and a driveway consolidation plan for the Everest portion of the Houghton/Everest Neighborhood Center north of NE 68th Street.**

TRANSPORTATION

STREETS, BICYCLE AND PEDESTRIAN CIRCULATION

Circulation patterns and improvements are recommended.

The circulation pattern in the Everest Neighborhood is fairly well established and allows for convenient travel through the neighborhood with minimal impacts on the majority of residential uses (see Figures EV-4, EV-5 and EV-6). Kirkland Way and NE 68th Street serve as major east/west corridors for through traffic. Sixth Street South is, and should remain, the major north/south corridor for through traffic. Interstate 405 is located along the eastern boundary of the Everest Neighborhood. Future modifications to circulation patterns in the Everest Neighborhood should conform to the following provisions. See also the Transportation Chapter:

- (1) Industrial traffic in residential areas should be discouraged.

Industrial access should be directed towards the nearest arterial street capable of handling the traffic (see Figure EV-4).

- (2) Kirkland Way and Cross Kirkland Corridor trestle.

Although Kirkland Way presently accommodates a significant amount of traffic, this route poses several problems. Numerous accidents have occurred in the vicinity of the Cross Kirkland Corridor bridge (old railroad trestle crossing). The City should continue to find ways to solve these traffic problems.

- (3) Portions of 10th Street South to remain unopened.

Wetlands are present southeast of Everest Park and therefore 10th Street South south of Slater Avenue South should not become a through traffic route.

- (4) Improve the pedestrian/bicycle circulation system in the neighborhood by providing improvements for pedestrians and bicycles according to Figure EV-5 and consistent with the Transportation Master Plan.

Major pedestrian and bicycle pathways should be built through the area according to the designations shown in Figures EV-5 and EV-6. Unopened segments of 10th Street South, Alexander Avenue, and Slater Avenue South contain unimproved pathways which provide a pedestrian link to Everest Park for the areas to the east. Because of presence of wetlands vehicular and pedestrian access may be limited; however, these pathways should remain. If the rights-of-way are developed, the improvements should be designed to accommodate pedestrian and bicycle traffic in order to maintain the existing access to Everest Park. An additional east/west pedestrian corridor is needed between 10th Street South and 8th Street South. Portions of Kirkland Way between Kirkland Avenue and NE 85th Street lack sidewalks. The City should pursue funding to make sidewalk connections along the street. Furthermore, public pedestrian access should be developed from the east end of 9th Avenue South to NE 70th Street to provide convenient access to public transit facilities near Interstate 405.

- (5) Methods to alleviate traffic and parking problems on 8th Street South should be studied.

The residential portion of 8th Street South between Railroad Avenue and 9th Avenue South has been impacted by traffic and parking associated with industrial uses to the north and users of Everest Park. Consequently, the City should undertake measures to reduce these impacts. Traffic control measures also should be required of future industrial and/or park development.

Figure EV-4: Everest Street Classifications

Figure EV-5: Everest Street Pedestrian System

Figure EV-6: Everest Bicycle System

- (6) Support development of the Cross Kirkland Corridor as a multipurpose trail for pedestrians and bicycles with access points along the corridor.

The Cross Kirkland Corridor provides an opportunity for a bicycle, pedestrian and ~~rail-transportation~~ **high capacity transit corridor**. With development, redevelopment or platting, public pedestrian and bicycle access easements should be provided for properties adjacent to the Cross Kirkland Corridor consistent with the CKC Master Plan and the PROS Plan.

- (7) Support transportation measures that will reduce commuter or pass through traffic through the neighborhood.

PUBLICATION SUMMARY
OF ORDINANCE O-4629

AN ORDINANCE OF THE CITY OF KIRKLAND RELATING TO COMPREHENSIVE PLANNING, ZONING AND LAND USE AND AMENDING THE COMPREHENSIVE PLAN ORDINANCE 3481, AS AMENDED, AND APPROVING A SUMMARY FOR PUBLICATION, FILE NO. CAM16-02742.

SECTION 1. Provides amendments to the Comprehensive Plan for the Central Houghton Neighborhood, the Everest Neighborhood and the Land Use Element.

SECTION 2. Provides a severability clause for the ordinance.

SECTION 3. Establishes that this ordinance, to the extent it is subject to disapproval jurisdiction, will be effective within the disapproval jurisdiction of the Houghton Community Council Municipal Corporation upon approval by the Houghton Community Council or the failure of said Community Council to disapprove this ordinance within 60 days of the date of the passage of this ordinance.

SECTION 4. Except as provided in Section 3, establishes the effective date of the Ordinance and authorizes the publication of the ordinance by summary, which summary is approved by the City Council pursuant to Section 1.08.017 Kirkland Municipal Code.

SECTION 6. Directs the City Clerk to certify and forward a complete certified copy of this ordinance to the King County Department of Assessments.

The full text of this Ordinance will be mailed without charge to any person upon request made to the City Clerk for the City of Kirkland. The Ordinance was passed by the Kirkland City Council at its meeting on the 12th day of December, 2017.

I certify that the foregoing is a summary of Ordinance No. O-4629 approved by the Kirkland City Council for summary publication.



Kathi Anderson, City Clerk